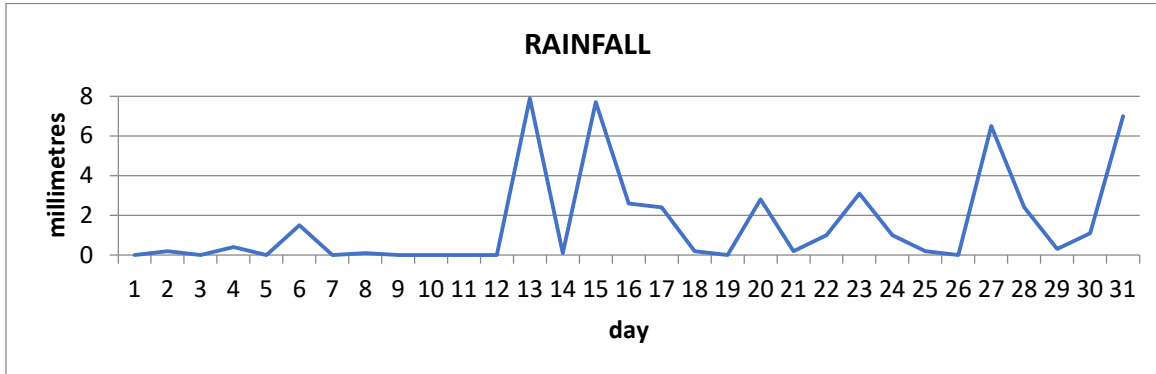


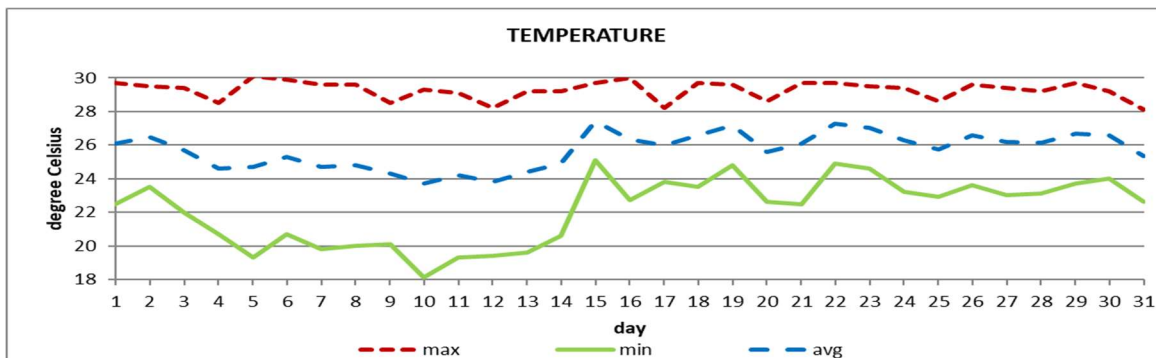
MONTHLY CLIMATE SUMMARY

DOUGLAS-CHARLES AIRPORT

December 2022



Total	48.7mm / 1.92in
Normal	219.2mm / 8.63in
Daily average	1.6mm / 0.06in



Average	25.7°C / 79°F
Normal	25.8°C / 79°F

OTHER

Parameter	Month	Date	Normal	Monthly Historical
Relative Humidity	78%			
Cloud Cover	5 oktas			
Rainfall				Max: 631.4mm / 24.86in (2001)
Rainfall Total	48.7mm / 1.92in			Min: 48.7mm / 1.92in (2022)
Cumulative yearly total	3173.3mm / 124.92in			
Maximum	7.9mm / 0.31in	13 th		
Number of rainfall days (≥1mm)	13			
Temperature				
Actual Maximum	30.1°C / 86°F	5 th		31.1°C / 88°F (1987)
Actual Minimum	18.1°C / 64°F	10 th		16.9°C / 63°F (1991)
Mean Maximum	29.3°C / 84°F		28.9°C / 84°F	29.8°C / 86°F (1997, 2003)
Mean Minimum	22.1°C / 72°F		22.7°C / 73°F	20.6°C / 70°F (1992)
Sunshine Hours				
Average daily duration	7hrs 54mins		6hrs 30mins	
Highest daily	9hrs 54mins	5 th , 6 th		
Percentage received	71%			
Wind				
Direction	110° (East south east)			
Speed	8kts / 15km/h			
Maximum Gust	33kts / 61km/h	25 th , 26 th		
Sea-Level Pressure	1015.3mbs / 29.98inHg		1013mbs	

REMARKS: climatological normal rainfall and temperature- 30-year average (1991-2020)

Rainfall total was about 20% of the mean; record low for December. Mean temperature was normal with the usual daytime highs but cooler than usual night-time lows. Troughs were dominant during the first 2 weeks of the month, while high pressure systems were dominant during the last 2 weeks. Hazy and breezy conditions were observed.