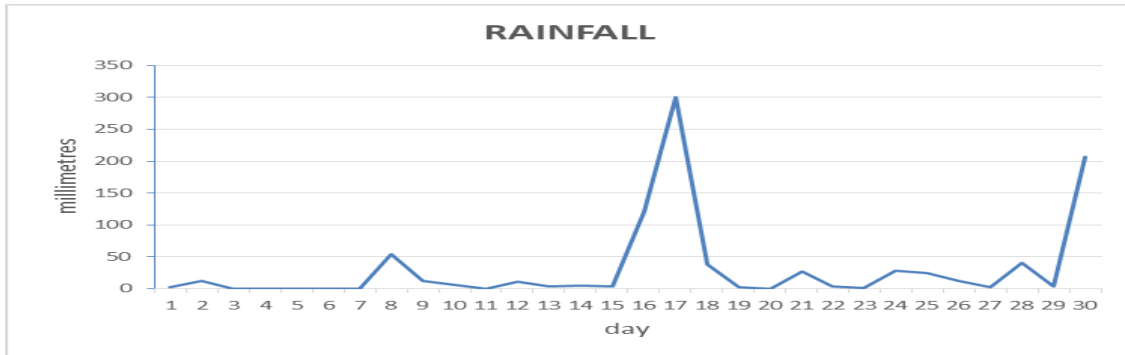
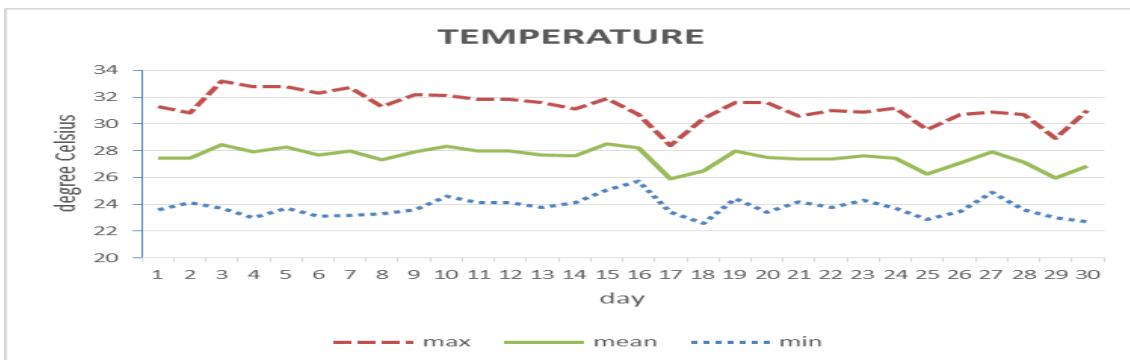


MONTHLY CLIMATE SUMMARY
DOUGLAS - CHARLES AIRPORT
September 2022



Total	917.0mm / 36.10in
Normal	319.1mm / 12.56in
Daily average	30.57mm / 1.20in



Average	27.5°C / 82°F
Normal	27.6°C / 82°F

OTHER

Parameter	Month	Date	Normal	Monthly Historical
Relative humidity	86%			
Cloud cover	6 oktas			
Rainfall				
Rainfall Total	917.0mm / 36.10in			Max: 917.0mm / 36.10in (2022) Min: 94.3mm / 3.71in (2012)
Cumulative yearly total	2281.4mm / 89.82in			
Maximum	300.2mm / 11.82in	17 th		
Number of rainfall days (≥1mm)	22			
Temperature				
Actual Maximum	33.2°C / 91°F	3 rd		34.3°C / 93°F (2012)
Actual Minimum	22.6°C / 73°F	18 th		20.0°C / 68°F (1992)
Mean Maximum	31.3°C / 88°F		31.0°C / 88°F	32.2°C / 90°F (2006)
Mean Minimum	23.8°C / 74°F		24.1°C / 75°F	22.5°C / 73°F (1992)
Sunshine hours				
Average daily duration	7hrs 12mins		7hrs 05mins	
Highest daily	11hrs 12mins	11 th		
Percentage received	59%			
Wind				
Direction	140° (South east)			
Speed	06kts / 11km/h			
Maximum gust	36kts / 67km/h	21 st		
Sea-level pressure	1013.4mbs / 29.93inHg		1013mbs	

REMARKS: Climatological normal -30-year average (1991-2020)

Rainfall total broke all time monthly high (November 2004) at Douglas-Charles. Temperatures were normal. Tropical waves and troughs were active this month. Dust haze was minimal. A tropical storm watch was issued for TS Fiona on the 16th. Flooding was recorded on the 17th and 30th. Thunderstorms were recorded on 8 days.