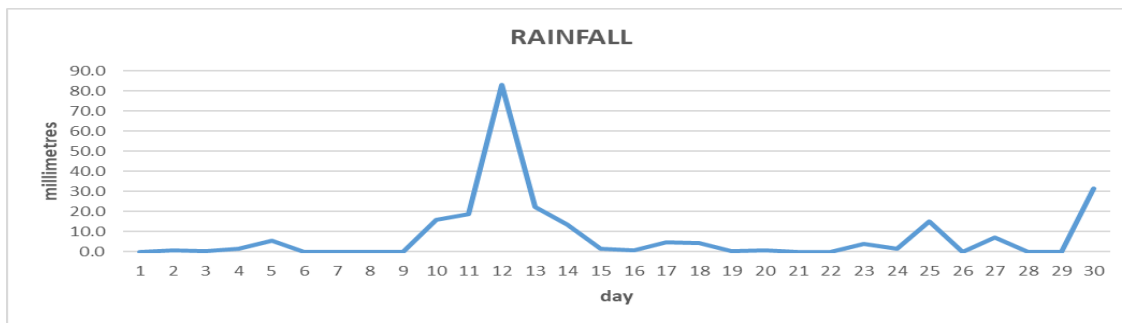
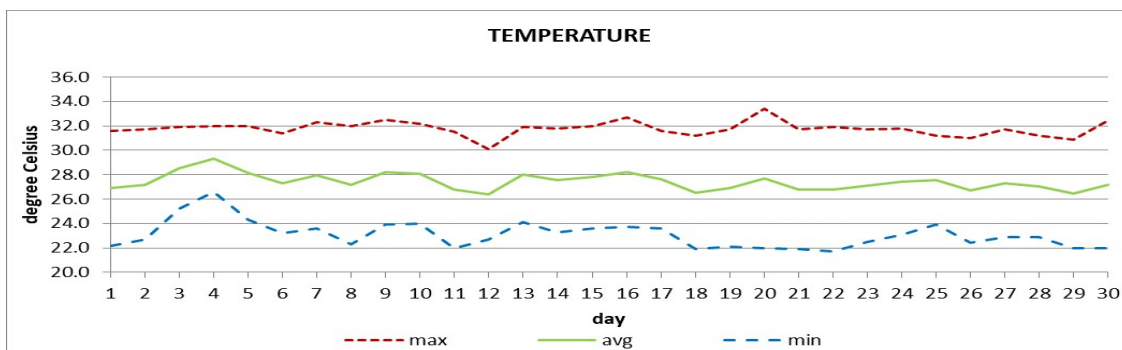


**DOUGLAS - CHARLES AIRPORT**

**September 2021**



Total	233.3mm/ 9.19in
Normal	319.1mm/ 12.56in
Daily average	7.8mm / 0.31in



Average	27.4°C/ 81°F
Normal	27.6°C/ 82°F

**OTHER**

Parameter	Month	Date	Normal	Monthly Historical
<b>Relative Humidity</b>	81%			
<b>Cloud Cover</b>	5 oktas			
<b>Rainfall</b>				
Rainfall Total	233.3mm / 9.19in			Max: 744.5mm / 29.31in (2004)
Cumulative yearly total	1499.6mm / 59.04in			Min: 94.3mm / 3.71in (2012)
Maximum	83.1mm / 3.27in	12 <sup>th</sup>		
Number of rainfall days (≥1mm)	15			
<b>Temperature</b>				
Actual Maximum	33.4°C / 91°F	20 <sup>th</sup>		34.3°C / 93°F (2012)
Actual Minimum	21.7°C / 72°F	22 <sup>nd</sup>		20.0°C / 68°F (1992)
Mean Maximum	31.8°C / 90°F		31.0°C / 88°F	32.2°C / 90°F (2006)
Mean Minimum	23.1°C / 73°F		24.1°C / 75°F	22.5°C / 73°F (1992)
<b>Sunshine Hours</b>				
Average daily duration	9hrs 06mins		7hrs 05mins	
Highest daily	11hrs 12mins	20 <sup>th</sup>		
Percentage received	74.7%			
<b>Wind</b>				
Direction	130° (south east)			
Speed	6kts / 11km/h			
Maximum Gust	58kts / 107km/h	12 <sup>th</sup>		
<b>Sea-Level Pressure</b>	1014.7mbs / 29.97inHg		1013mbs	

**REMARKS:** climatological normal rainfall- 30-year average (1991-2020) and average temperature - 30-year average (1991-2020)

Rainfall total was slightly less than usual. Cooler than usual nights with warmer than usual daytime highs were recorded. Record number of sunshine hours for September. Trough systems and the Atlantic high-pressure system were the dominant features with a few tropical waves. A tropical wave affected on the 12<sup>th</sup>. TS Peter passed just north of the chain from the 19<sup>th</sup> to 20<sup>th</sup>. Thunderstorms were recorded on 4 days. Haze observed.