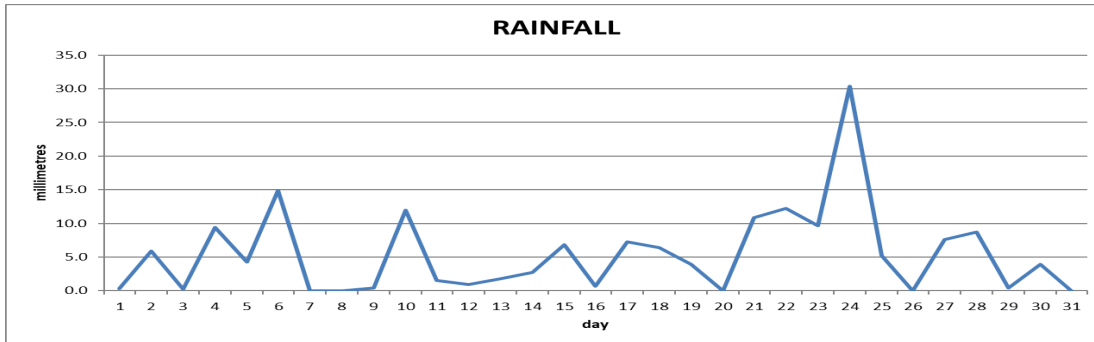
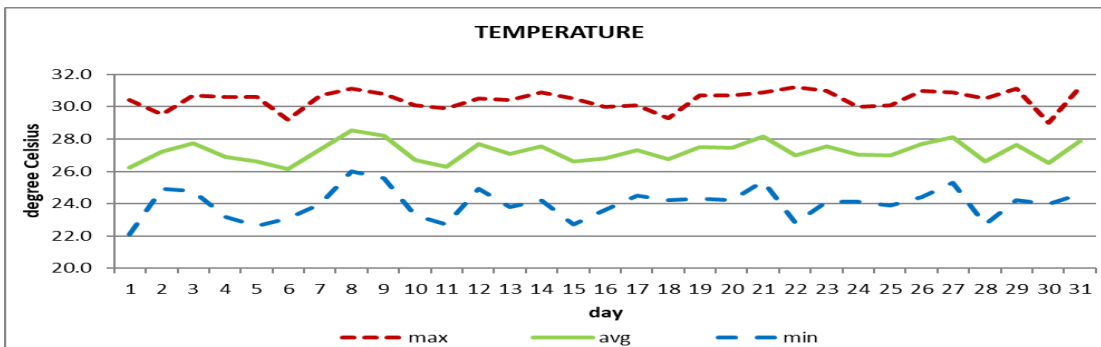


**DOUGLAS - CHARLES AIRPORT**
**JULY 2021**


Total	168.4mm / 6.6in
Normal	235.3mm / 9.26in
Daily average	5.4mm / 0.21in



Average	27.2°C / 81°F
Normal	27.8°C / 82°F

**OTHER**

Parameter	Month	Date	Normal	Monthly Historical
<b>Relative humidity</b>	82%			
<b>Cloud cover</b>	6 oktas			
<b>Rainfall</b>				
Rainfall total	168.4mm / 6.6in			Max: 424.3mm / 16.70in (1987) Min: 43.1mm / 1.70in (1989)
Cumulative yearly total	1035.8mm / 40.78in			
Maximum	30.4mm / 1.20in	24 <sup>th</sup>		
Number of rainfall days(≥1mm)	20			
<b>Temperature</b>				
Actual Maximum	31.2°C / 88°F	22 <sup>nd</sup> , 31 <sup>st</sup>		33.2°C / 91°F (1995)
Actual Minimum	22.1°C / 72°F	1 <sup>st</sup>		20.7°C / 70°F (1989/1993)
Mean Maximum	30.4°C / 86°F		30.7°C / 88°F	31.4°C / 88°F (2010, 2017)
Mean Minimum	24.0°C / 75°F		24.9°C / 77°F	23.9°C / 75°F (1992, 2019)
<b>Sunshine hours</b>				
Average daily duration	UNS		7hrs 36mins	
Highest daily	10hrs 48mins	5 <sup>th</sup>		
Percentage received	UNS			
<b>Wind</b>				
Direction	110° (east south east)			
Speed	09kts / 17km/h			
Maximum gust	36kts / 67km/h	2 <sup>nd</sup>		
<b>Sea-level pressure</b>	1017.4mbs / 30.05inHg		1013mbs	

**REMARKS: Climatological normal -30-year average (1991-2020)**

Below normal rainfall total with cooler than usual temperatures were recorded for the month. Trough systems, tropical waves and the Atlantic high-pressure system were the dominant features. Hurricane Elsa affected the island on the 2<sup>nd</sup>. A tropical storm watch issued at 6am was upgraded to a warning at 9am. The warning was discontinued at 6pm. Gusty winds and dust haze were also observed throughout the month. Thunderstorms were recorded on 1 day.