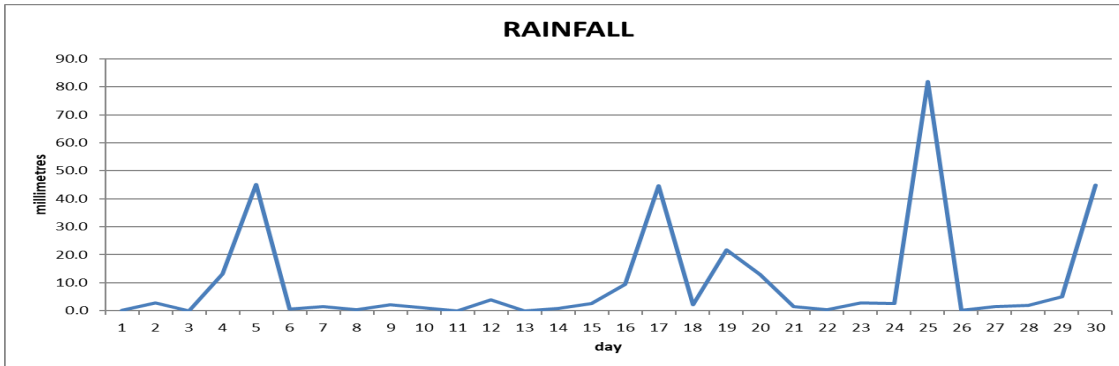
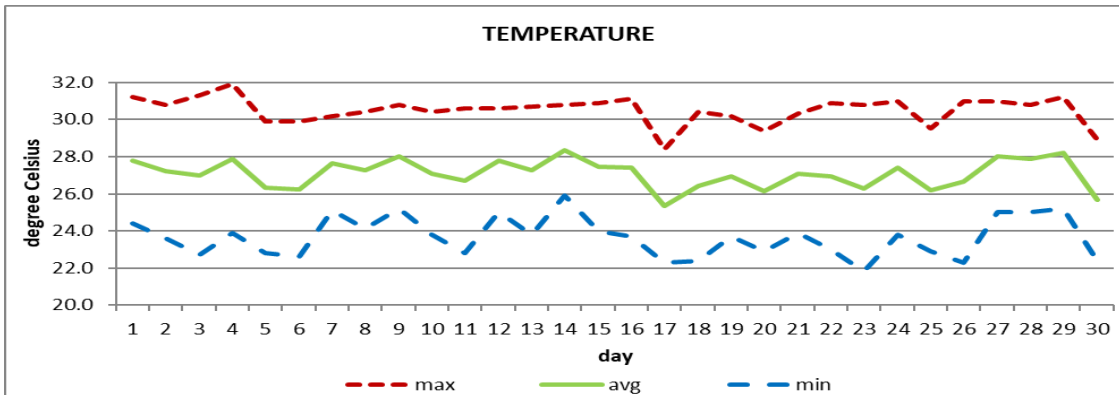


**MONTHLY CLIMATE SUMMARY  
DOUGLAS - CHARLES AIRPORT  
June 2021**



Total	307.5mm / 12.1in
Normal	189.9mm / 7.48in
Daily average	10.3mm / 0.41in



Average	27.1°C / 81°F
Normal	27.7°C / 82°F

**OTHER**

Parameter	Month	Date	Normal	Monthly Historical
<b>Relative humidity</b>	81%			
<b>Cloud cover</b>	7 oktas			
<b>Rainfall</b>				
Rainfall total	307.5mm / 12.1in			Max: 424.3mm / 16.70in (1987) Min: 43.1mm / 1.70in (1989)
Cumulative yearly total	867.4mm / 34.15in			
Maximum	81.8mm / 3.22in	25 <sup>th</sup>		
Number of rainfall days(≥1mm)	21			
<b>Temperature</b>				
Actual Maximum	31.9°C / 90°F	4 <sup>th</sup>		33.7°C / 93°F (1985)
Actual Minimum	21.8°C / 72°F	23 <sup>rd</sup>		20.4°C / 70°F (2019)
Mean Maximum	30.5°C / 88°F		30.5°C / 88°F	32.0°C / 90°F (2011)
Mean Minimum	23.7°C / 75°F		25.0°C / 77°F	23.7°C / 73°F (2021)
<b>Sunshine hours</b>				
Average daily duration	6hrs 24mins		7hrs 30mins	
Highest daily	11hrs 24mins	1 <sup>st</sup>		
Percentage received	49%			
<b>Wind</b>				
Direction	110° (east south east)			
Speed	09kts / 17km/h			
Maximum gust	41kts / 76km/h	17 <sup>th</sup>		
<b>Sea-level pressure</b>	1018.3mbs / 30.07inHg		1013mbs	

REMARKS: Climatological normal -30-year average (1991-2020)

Wetter than usual conditions were observed in June. Cooler than to the usual temperatures were recorded. (Lowest average minimum temperature on record). The Atlantic high-pressure system and tropical waves were the dominant features. Gusty winds and dust haze were also observed throughout the month. Thunderstorms were recorded on 5 days.