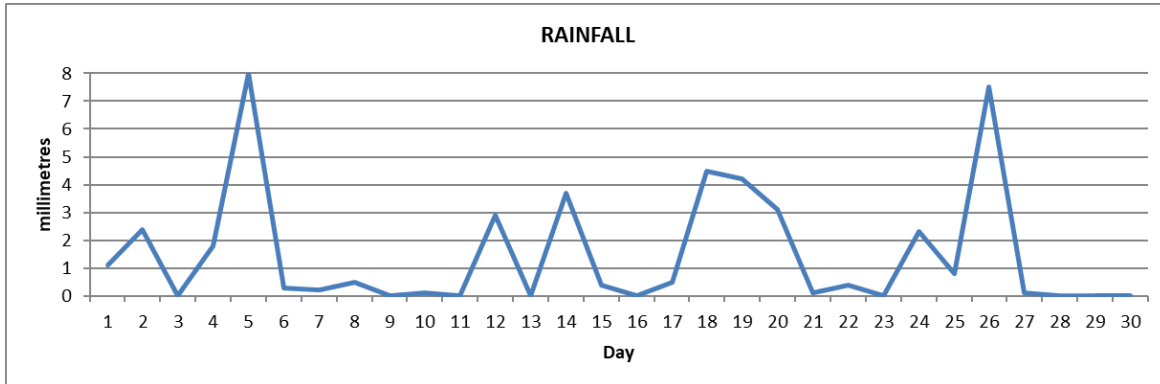
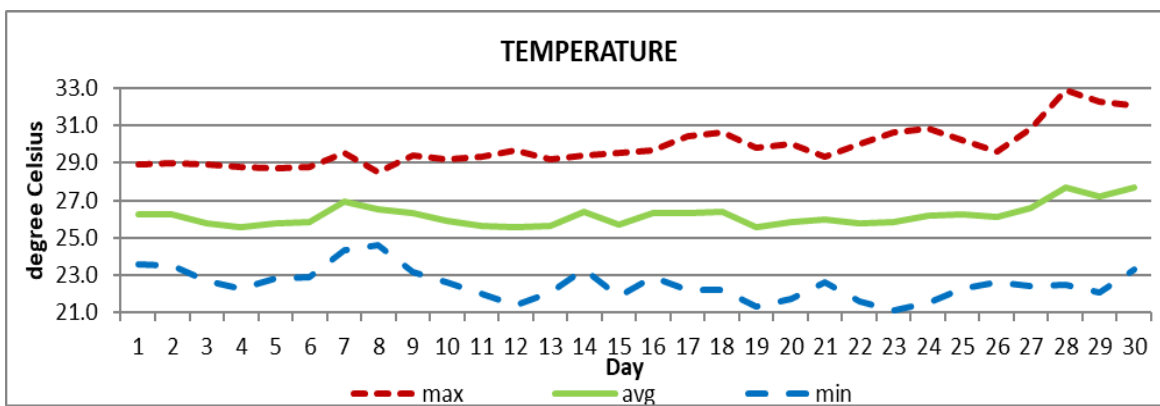


**MONTHLY CLIMATE SUMMARY
DOUGLAS - CHARLES AIRPORT
APRIL 2023**



Total	44.9mm / 1.77in
Normal	171.8mm / 6.76in
Daily average	1.50mm / 0.06in



Average	26.2°C / 79°F
Normal	26.2°C / 79°F

OTHER

Parameter	Month	Date	Normal	Monthly Historical
Relative humidity	80%			
Cloud cover	6 oktas			
Rainfall				
Rainfall total	44.9mm / 1.77in			Max: 772.9mm / 30.43in (1981) Min: 18.8mm / 0.74in (1997)
Cumulative yearly total	341.9mm / 13.46in			
Maximum	8.0mm / 0.32in	5 th		
Number of rainfall days(≥1mm)	11			
Temperature				
Actual maximum	32.9°C / 91°F	28 th		33.1°C / 91°F (2005)
Actual minimum	21.1°C / 70°F	23 th		18.0°C / 64°F (1985)
Mean maximum	29.9°C / 86°F		29.4°C / 84°F	31.3°C / 88°F (2005)
Mean minimum	22.5°C / 73°F		23.0°C / 73°F	21.5°C / 70°F (1985)
Sunshine hours				
Average daily duration	9hrs 12mins		8hrs 12mins	
Highest daily	11hrs 48mins	29 th , 30 th		
Percentage received	74%			
Wind				
Direction	120° (east south east)			
Speed	08kts / 15km/h			
Maximum gust	29kts / 54km/h	01 st		
Sea-level pressure	1015.2mbs / 29.98inHg		1013mbs	

REMARKS: Climatological normal -30-year average (1991-2020)

The rainfall total was below normal. Daytime temperatures were slightly above normal with cooler than usual night-time temperatures. The Atlantic high-pressure system was the dominant feature throughout the month. Gusty winds and dust haze were recorded.