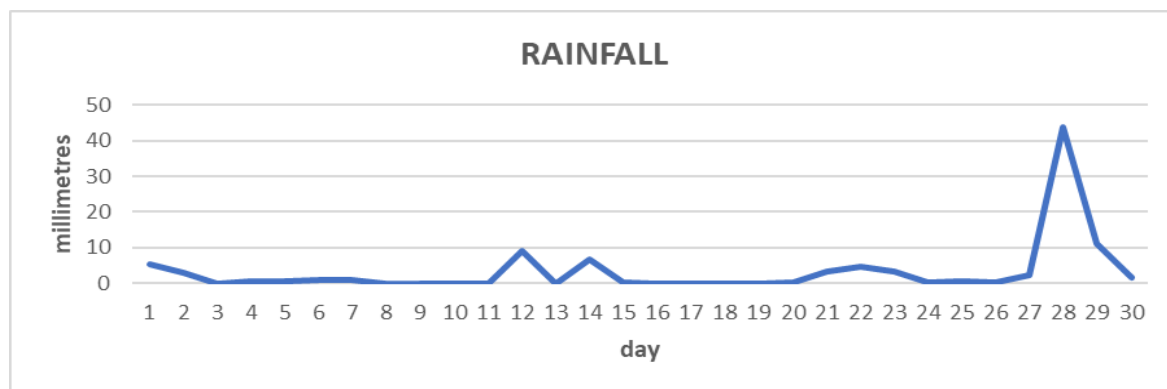
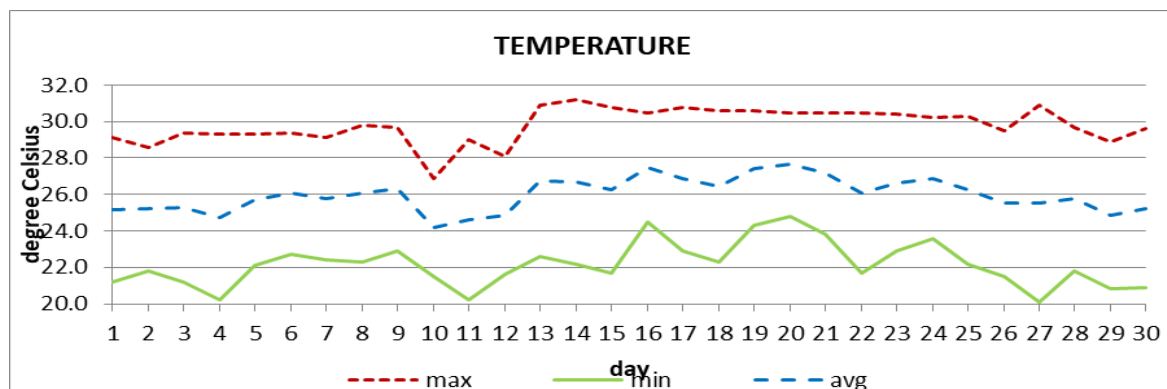


MONTHLY CLIMATE SUMMARY
DOUGLAS - CHARLES AIRPORT
APRIL 2021



Total	98.0mm / 3.86in
Normal	179.3mm / 7.06in
Daily average	3.3mm / 0.13in



Average	26.0°C / 79°F
Normal	26.2°C / 79°F

OTHER

Parameter	Month	Date	Normal	Monthly Historical
Relative humidity	77%			
Cloud cover	6 oktas			
Rainfall				
Rainfall total	98.0mm / 3.86in			Max: 772.9mm / 30.43in (1981) Min: 18.8mm / 0.74in (1997)
Cumulative yearly total	530.8mm / 20.90in			
Maximum	43.8mm / 1.72in	28 th		
Number of rainfall days(≥1mm)	11			
Temperature				
Actual maximum	31.2°C / 88°F	14 th		33.1°C / 91°F (2005)
Actual minimum	20.1°C / 68°F	27 th		18.0°C / 64°F (1985)
Mean maximum	29.8°C / 86°F		29.5°C / 86°F	31.3°C / 88°F (2005)
Mean minimum	22.2°C / 72°F		22.9°C / 73°F	21.5°C / 70°F (1985)
Sunshine hours				
Average daily duration	N/A		8hrs 12mins	
Highest daily	N/A			
Percentage received	N/A			
Wind				
Direction	120° (east south east)			
Speed	07kts / 13km/h			
Maximum gust	30kts / 56km/h	01 st		
Sea-level pressure	1015.5mbs / 29.99inHg		1013mbs	

REMARKS: Climatological normal -30-year average (1991-2020)

The rainfall total was slightly below normal. Daytime temperatures were slightly above normal with cooler than usual nighttime temperatures. The Atlantic high-pressure system was the dominant feature. Gusty winds and dust haze along with light volcanic ash were recorded.