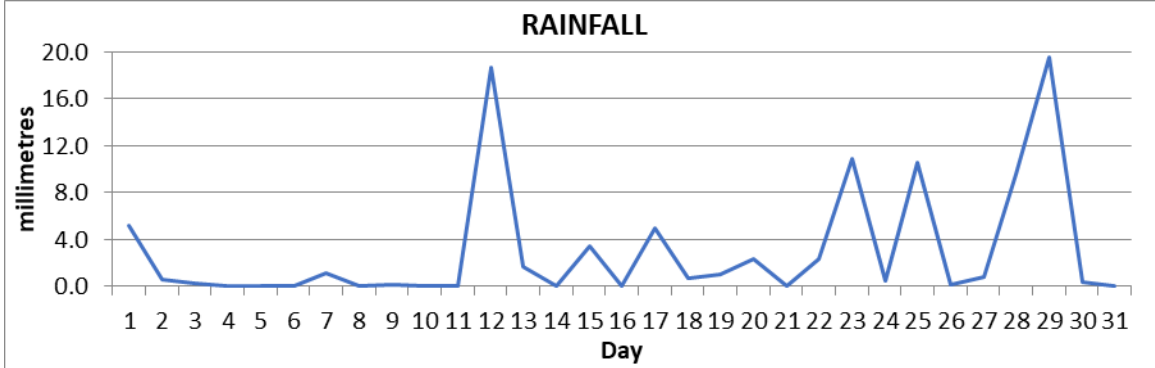


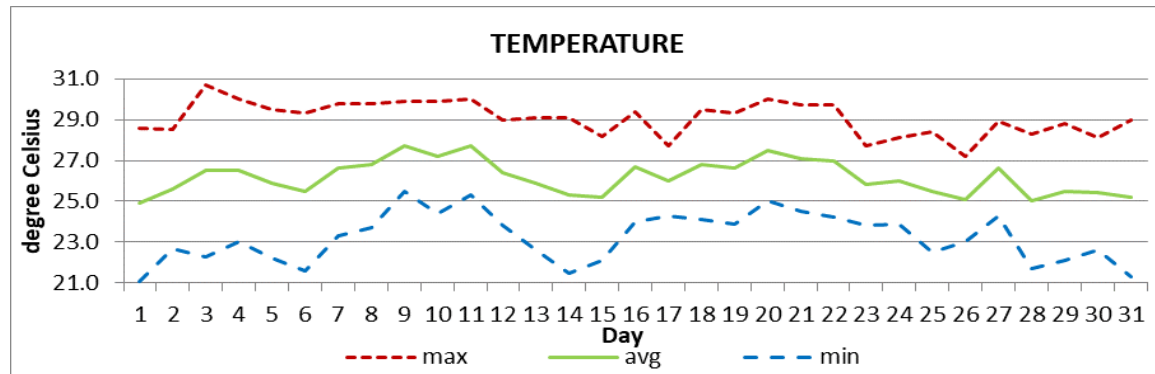
MONTHLY CLIMATE SUMMARY

DOUGLAS-CHARLES AIRPORT

January 2024



Total	95.3mm / 3.75in
Normal	136.0mm / 5.35in
Daily Avg	3.1mm / 0.12in



Average	26.2°C / 79°F
Normal	25.7°C / 79°F

OTHER

Parameter	Month	Date	Normal	Monthly Historical
Relative Humidity	81%			
Cloud Cover	5 oktas			
Rainfall				
Rainfall Total	95.3mm / 3.75in			Max: 249.0mm / 9.80in (1998)
Cumulative yearly total	95.3mm / 3.75in			Min: 68.6mm / 2.70in (1989)
Maximum	19.6mm / 0.77in	29 th		
Number of rainfall days (≥1mm)	13			
Temperature				
Actual Maximum	30.7°C / 88°F	3 RD		30.7°C / 88°F (2024)
Actual Minimum	21.1°C / 70°F	1 ST		17.8°C / 64°F (2022)
Mean Maximum	29.1°C / 84°F		28.6°C / 84°F	31.8°C / 90°F (1987)
Mean Minimum	23.2°C / 73°F		22.2°C / 72°F	17.1°C / 63°F (1988)
Sunshine Hours				
Average daily duration	UNS		6hrs 42mins	
Highest daily				
Percentage received				
Wind				
Direction	110° (East south east)			
Speed	9kts / 17km/h			
Maximum Gust	31kts / 57km/h	25 th		
Sea-Level Pressure	1017.5mbs / 30.05inHg		1013mbs	

REMARKS: climatological normal rainfall and temperature- 30-year average (1991-2020)

High-pressure system was most prevalent throughout the month. The rainfall total was below normal. Warmer than usual temperatures were observed. A new maximum temperature record was set breaking the 2012 record. The sea level pressure was significantly above normal. Twenty-five days observed wind gusts of which 19 observed gusts of at least 20kts/ 37km/h. Occasionally hazy conditions were observed.