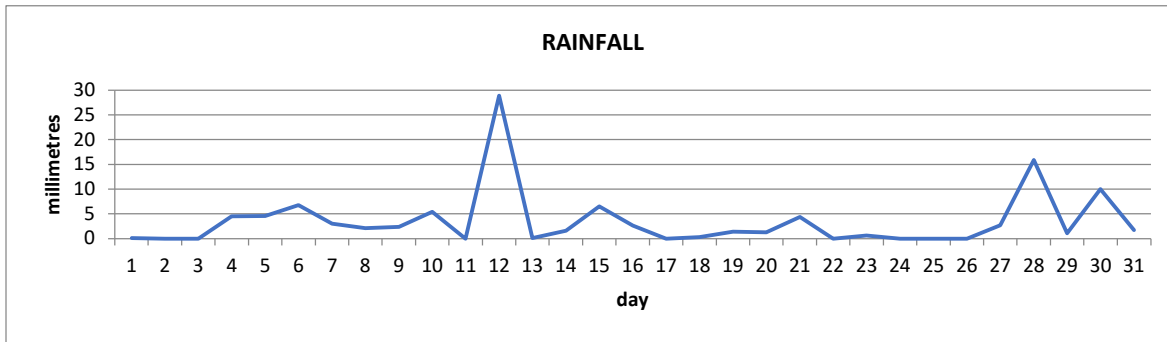


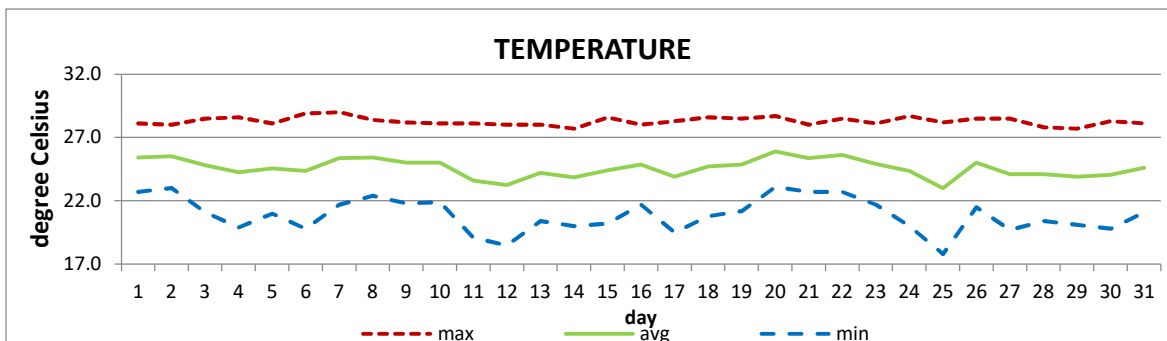
MONTHLY CLIMATE SUMMARY

DOUGLAS-CHARLES AIRPORT

January 2022



Total	108.0mm / 4.25in
Normal	136.0mm / 5.35in
Daily average	3.5mm / 0.14in



Average	24.6°C / 77°F
Normal	25.7°C / 79°F

OTHER

Parameter	Month	Date	Normal	Monthly Historical
Relative Humidity	79%			
Cloud Cover	5 oktas			
Rainfall				
Rainfall Total	108.0mm / 4.25in			Max: 249.0mm / 9.80in (1998)
Cumulative yearly total	108.0mm / 4.25in			Min: 68.6mm / 2.70in (1989)
Maximum	28.9mm / 1.24in	12 th		
Number of rainfall days (≥1mm)	19			
Temperature				
Actual Maximum	29.0°C / 84°F	7 th		29.4°C / 84°F (2012)
Actual Minimum	17.8°C / 64°F	25 th		17.8°C / 64°F (2022)
Mean Maximum	28.3°C / 82°F		28.6°C / 84°F	31.8°C / 90°F (1987)
Mean Minimum	20.9°C / 70°F		22.2°C / 72°F	17.1°C / 63°F (1988)
Sunshine Hours				
Average daily duration	7hrs 54mins		6hrs 42mins	
Highest daily	10hrs 06mins	30 th		
Percentage received	70%			
Wind				
Direction	110° (East south east)			
Speed	7kts / 13km/h			
Maximum Gust	37kts / 69km/h	27 th		
Sea-Level Pressure	1016.7mbs / 30.02inHg		1013mbs	

REMARKS: climatological normal rainfall and temperature- 30-year average (1991-2020)

Rainfall was slightly less than usual. Mean temperature was cooler than usual, with usual daytime highs but cooler than usual night-time lows. A new record minimum temperature was set for January. The Atlantic high was most dominant. A few troughs and a shearline affected the island as well. High surf advisories and small craft warnings were most common during the first 3 weeks. Hazy and breezy conditions were observed.