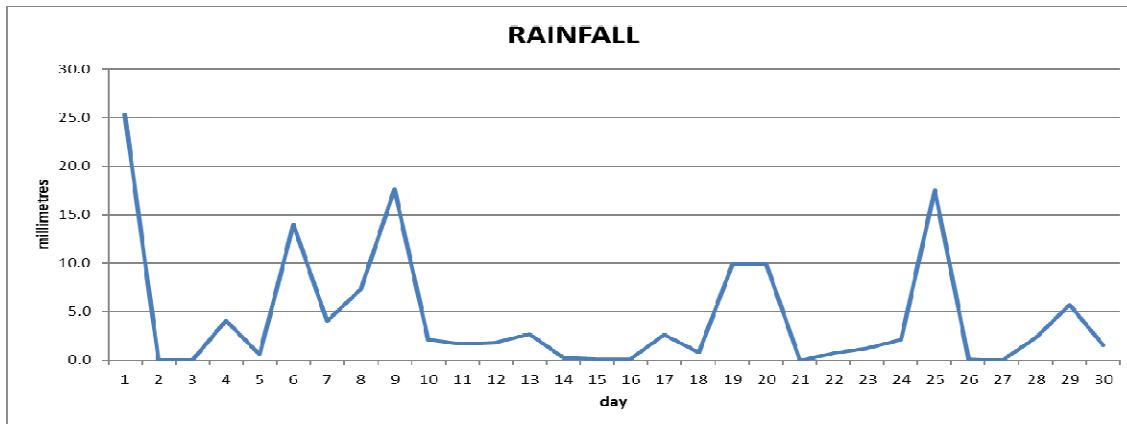
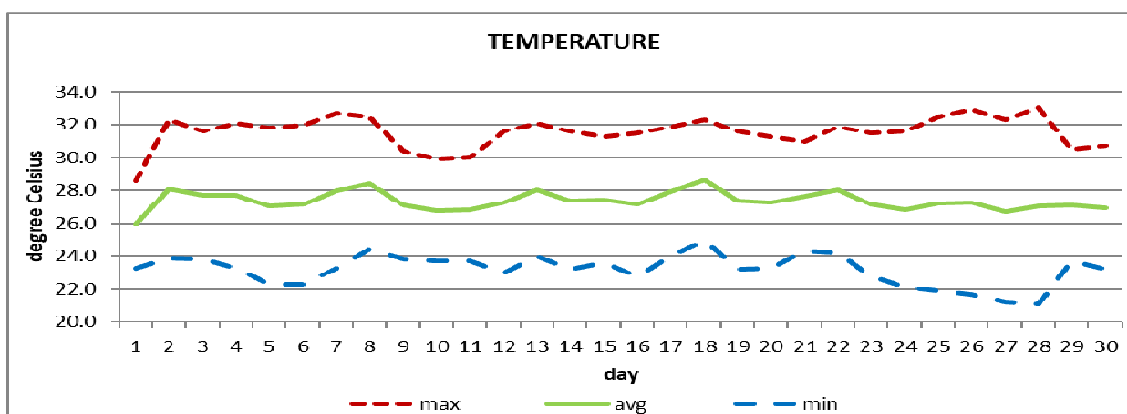


**CANEFIELD AIRPORT**

November 2020



Total	136.0mm/ 5.4in
Normal	194.2mm/ 7.65in
Daily average	4.5mm/ 0.18in



Average	27.4°C/ 81°F
Normal	27.1°C/ 81°F

**OTHER**

Parameter	Month	Date	Average	Monthly Historical
Relative humidity	75%			
Cloud cover	5 oktas			
<b>Rainfall</b>				
Rainfall total	136.0mm/ 5.4in			Max: 438.3mm / 17.26in (1984)
Cumulative yearly total	1480.8mm/ 58.30in			Min: 28.4mm / 1.12in (2001)
Maximum	25.3mm/ 0.99in	1 <sup>st</sup>		
Number of rainfall days(≥1mm)	19			
<b>Temperature</b>				
Actual maximum	33.0°C/ 91°F	28 <sup>th</sup>		33.8°C / 93°F (2013)
Actual minimum	21.1°C/ 70°F	28 <sup>th</sup>		19.4°C / 66°F (2008)
Mean maximum	31.6°C / 90°F		31.1°C/ 88°F	32.4°C/ 90°F (1992)
Mean minimum	23.2°C / 73°F		23.2°C/ 73°F	22.4°C/ 72°F (2007)
<b>Wind</b>				
Direction	140° (south east)			
Speed	04kts/ 07km/h			
Maximum gust	33kts/ 61km/h	12 <sup>th</sup>		
<b>Sea-level pressure</b>	1012.1mbs/ 29.89inHg		1013mbs	

REMARKS: climatological normal rainfall- 30-year average (1982-2011) and average temperature revised - 21-year average (1990-2010)

Wet as usual conditions with warmer than usual daytime temperatures and normal night-time temperatures were recorded. A series of trough systems and the Atlantic high-pressure system were the dominant features. Thunderstorms were recorded on 2 days. Flooding and landslides across the north to central and south east areas on the 10<sup>th</sup>. Flooding in the Portsmouth area on the 29<sup>th</sup>.