



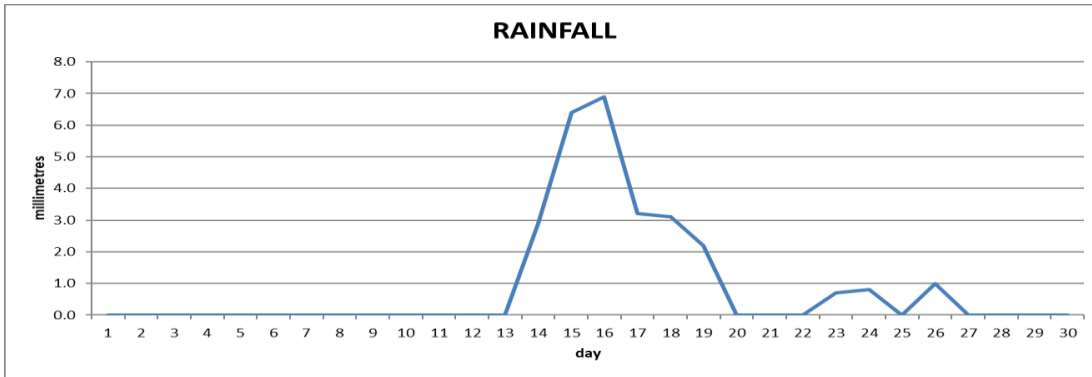
Tel: (767) 449 1752/ 611 4490/94

Email: www.metoffice@cwdom.dm

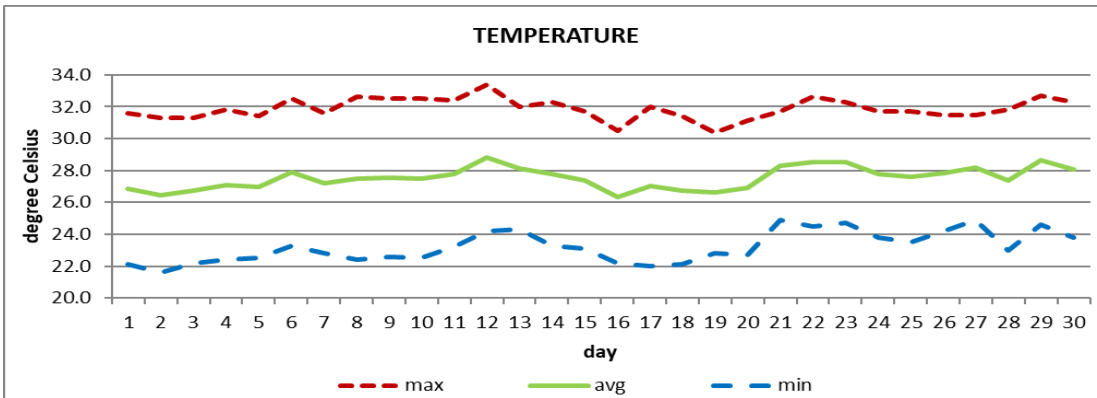
Website: www.weather.gov.dm

CANEFIELD AIRPORT

April 2020



Total	27.2mm/ 1.1in
Normal	54.8mm/ 2.16in
Daily average	0.9mm/ 0.04in



Average	27.5°C/ 82°F
Normal	26.9°C/ 81°F

OTHER

Parameter	Month	Date	Average	Monthly Historical
Relative humidity	66%			
Cloud cover	4 oktas			
Rainfall				Max: 203.6mm/ 8.02in (2013) Min: 3.5mm/ 0.14in (1983)
number of rainfall days (>1mm)	7			
cumulative yearly total	352.2mm/ 13.87in			
maximum	6.9mm/ 0.27in	16 th		
Temperature				
Mean maximum	31.9°C/ 90°F		30.9°C/ 88°F	32.7°C/ 91°F (2005)
Mean minimum	23.2°C/ 73°F		22.9°C/ 73°F	21.6°C/ 70°F (2008)
Actual maximum	33.4°C/ 91°F	12 th		34.8°C/ 95°F (2005)
Actual minimum	21.6°C/ 77°F	2 nd		18.6°C/ 66°F (2009)
Wind				
direction	180° (south)			
speed	5kts/ 09km/h			
maximum gust	26kts/ 48km/h	12 th 30 th		
Sea-level pressure	1014.7mbs/ 29.97inHg		1013mbs	

REMARKS: climatological normal rainfall- 30-year average (1982-2011) and average temperature revised - 21-year average (1990-2010)

Drier and warmer than usual conditions were recorded for April. The Atlantic high-pressure system was the dominant feature. Gusty winds were recorded throughout the month.