

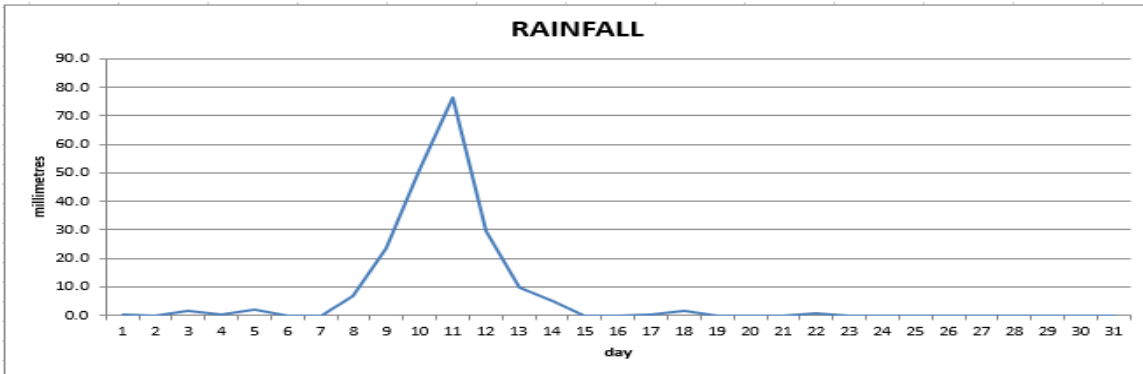


Tel: (767) 449 1752/ 445 7849
Fax: (767) 445 7849

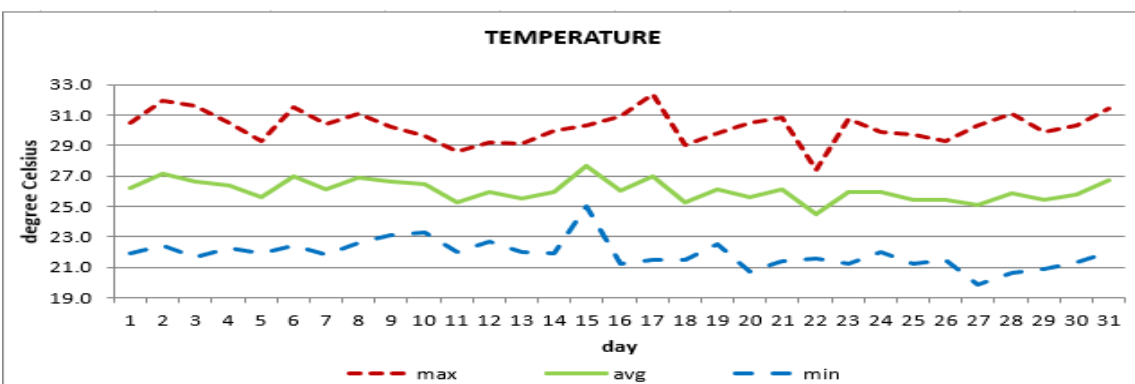
Email: www.metoffice@cwdom.dm
Website: www.weather.gov.dm

CANEFIELD AIRPORT

January 2020



Total	209.8mm/ 8.26in
Normal	108.3mm/ 4.26in
Daily average	6.8mm/ 0.27in



Monthly mean	26.1°C/ 79°F
21 Yr. average	25.7°C/ 79°F

OTHER

Parameter	Month	Date	Average	Monthly Historical
relative humidity	73%			
cloud cover	4 oktas			
rainfall				
number of rainfall days (>1mm)	10			Mx: 231.9mm/ 9.13in (2018) Mn: 31.1mm/ 1.22in (2019)
cumulative yearly total	209.8mm/ 8.26in			
maximum	76.5mm/ 3.01in	11 th		
Temperature				
Average Maximum	30.2°C/ 86°F		29.5°C/ 86°F	30.5°C/ 88°F (1998, 2010)
Average Minimum	21.9°C/ 72°F		21.8°C/ 72°F	20.7°C/ 70°F (1985)
Maximum	32.4°C/ 90°F	17 th		32.0°C/ 90°F (2005, 2016)
Minimum	19.9°C/ 68°F	27 th		18.2°C/ 64°F (2008)
wind				
direction	190° (south)			
speed	4kts/ 7km/h			
maximum gust	42kts/ 78km/h	10 th		
sea-level pressure	1014.9mbs/ 29.97inHg		1013mbs	

REMARKS: climatological normal rainfall- 30-year average (1982-2011) and temperature - 21-year average (1990-2010)

A strong Atlantic High-Pressure Systems resulted in windy conditions, rough seas and increased rainfall amounts during the first half of the month. Rainfall recorded during that period resulted in above normal rainfall total. Dry days were recorded throughout the latter half of the month, Warmer than to normal temperatures were recorded.