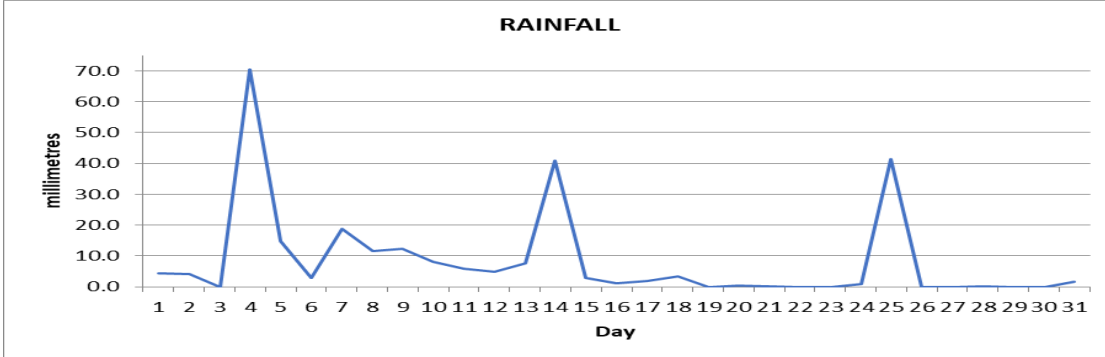


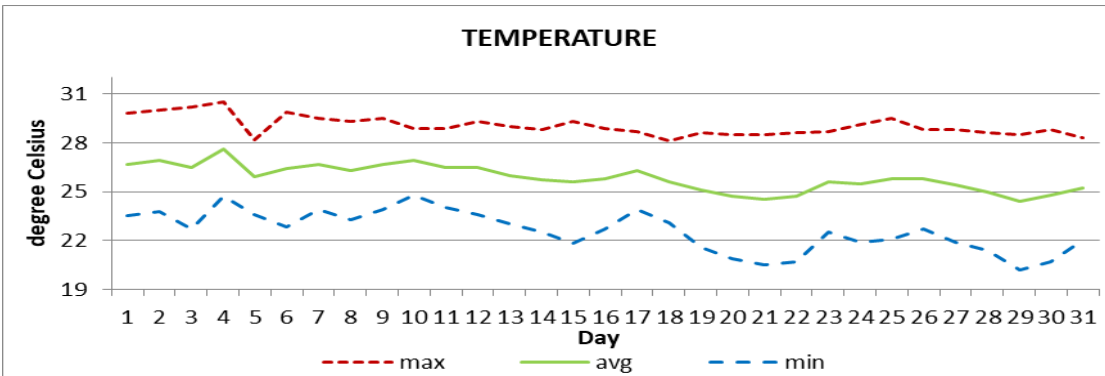
MONTHLY CLIMATE SUMMARY

DOUGLAS-CHARLES AIRPORT

December 2023



Total	260.9mm / 10.27in
Normal	206.9mm / 8.15in
Daily average	8.4mm / 0.33in



Average	25.8°C / 79°F
Normal	25.8°C / 79°F

OTHER

Parameter	Month	Date	Normal	Monthly Historical
Relative Humidity	85%			
Cloud Cover	5 oktas			
Rainfall				Max: 631.4mm / 24.86in (2001) Min: 48.7mm / 1.92in (2022)
Rainfall Total	260.9mm / 10.27in			
Cumulative yearly total	2 031.7mm / 79.99in			
Maximum	70.4mm / 2.77in	04 th		
Number of rainfall days (≥1mm)	19			
Temperature				
Actual Maximum	30.5°C / 88°F	4 th		31.1°C / 88°F (1987)
Actual Minimum	20.2°C / 68°F	29 th		16.9°C / 63°F (1991)
Mean Maximum	29.0°C / 84°F		29.0°C / 84°F	29.8°C / 86°F (1997, 2003)
Mean Minimum	22.6°C / 73°F		22.7°C / 73°F	20.6°C / 70°F (1992)
Sunshine Hours				
Average daily duration	6hrs 12mins		6hrs 30mins	
Highest daily	9hrs 30mins	20 th		
Percentage received	56%			
Wind				
Direction	130° (south east)			
Speed	6kts / 11km/h			
Maximum Gust	30kts / 56km/h	4 th , 5 th		
Sea-Level Pressure	1014.9mbs / 29.97inHg		1013mbs	

REMARKS: climatological normal rainfall and temperature- 30-year average (1991-2020)

The accumulated rainfall amount was above normal with the usual temperatures. The Atlantic high-pressure system was the dominant feature throughout the month. Occasional gusty winds were observed.