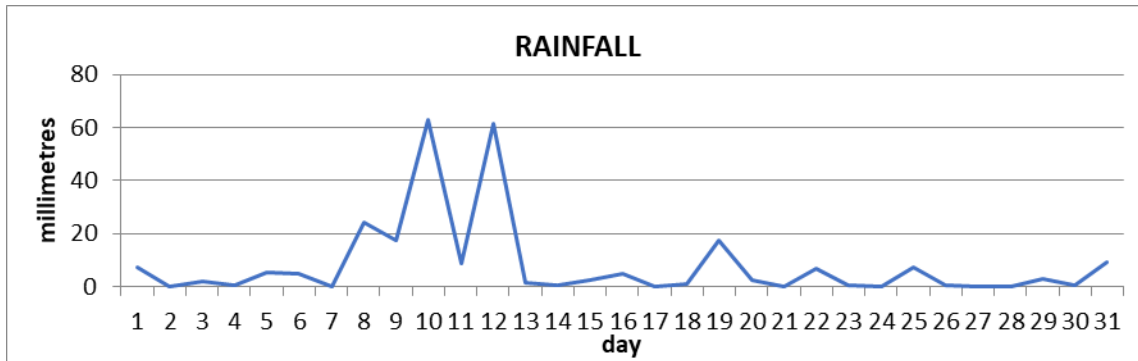




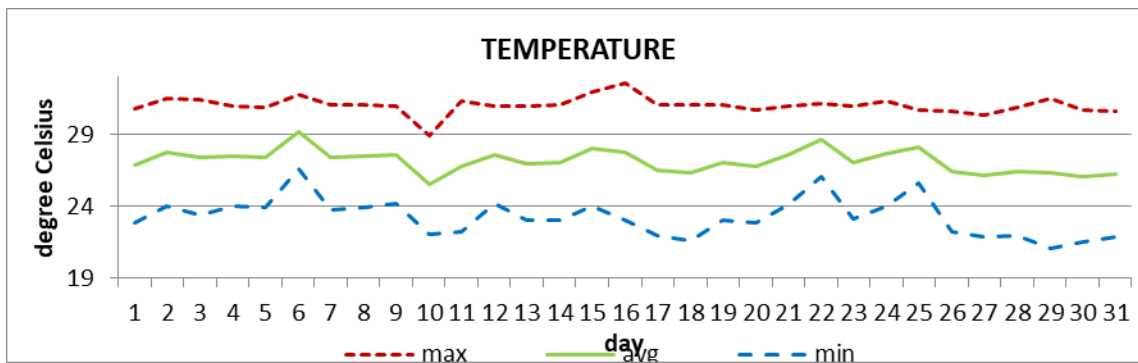
MONTHLY CLIMATE SUMMARY

DOUGLAS - CHARLES AIRPORT

October 2021



Total	254.5mm / 10.02in
Normal	322.5mm / 12.70in
Daily average	8.2mm / 0.32in



Average	27.2°C / 81°F
Normal	27.1°C / 81°F

OTHER

Parameter	Month	Date	Normal	Monthly Historical
Relative Humidity	81%			
Cloud Cover	6 oktas			
Rainfall				
Rainfall Total	254.5.1mm / 10.02in			Max: 644.9mm / 25.39in (1998)
Cumulative yearly total	1754.1mm / 69.06in			Min: 94.2mm / 3.71in (1991)
Maximum	62.8mm / 2.47in	10th		
Number of rainfall days (≥1mm)	19			
Temperature				
Actual Maximum	32.6°C / 91°F	16 th		33.5°C / 93°F (1999)
Actual Minimum	21.1°C / 70°F	29 th		17.2°C / 63°F (1995)
Mean Maximum	31.0°C / 88°F		30.6°C / 88°F	31.8°C / 90°F (2015)
Mean Minimum	23.3°C / 73°F		23.7°C / 75°F	21.6°C / 72°F (1992)
Sunshine Hours				
Average daily duration	7hrs 12mins		7hrs 06mins	
Highest daily	11hrs 36mins	17 th		
Percentage received	61%			
Wind				
Direction	120° (East south east)			
Speed	7kts / 13km/h			
Maximum Gust	33kts / 61km/h	21 st		
Sea-Level Pressure	1014.5mbs / 29.96inHg		1013mbs	

REMARKS: climatological normal rainfall and temperature- 30-year average (1991-2020)

Normal rainfall was recorded. Daytime highs were slightly warmer than usual while night-time lows were slightly cooler than usual. Trough system resulted in flooding on the 10th. Thunderstorms were recorded on 2 days. Dust haze was recorded, with volcanic ash plumes observed on the 9th and 28th.