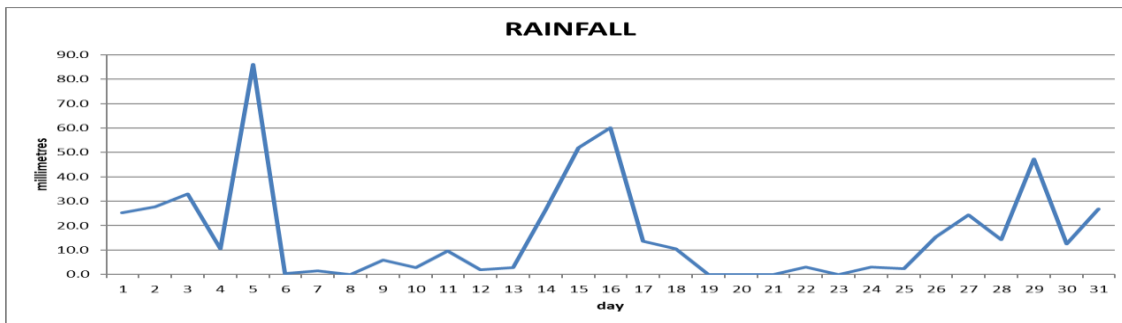
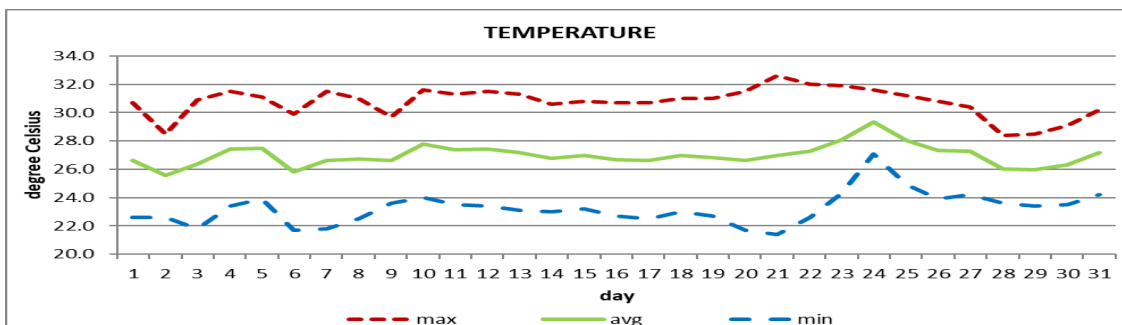


**DOUGLAS - CHARLES AIRPORT**  
**October 2020**



Total	519.1mm/ 20.44in
Normal	319.8mm/ 12.59in
Daily average	16.7mm / 0.66in



Average	27.0°C/ 81°F
Normal	27.1°C/ 81°F

**OTHER**

Parameter	Month	Date	Normal	Monthly Historical
<b>Relative Humidity</b>	85%			
<b>Cloud Cover</b>	6 oktas			
<b>Rainfall</b>				
Rainfall Total	519.1mm / 20.44in			Max: 644.9mm / 25.39in (1998)
Cumulative yearly total	1829.3mm / 72.02in			Min: 94.2mm / 3.71in (1991)
Maximum	86.0mm / 3.39in	5th		
Number of rainfall days (≥1mm)	25			
<b>Temperature</b>				
Actual Maximum	32.6°C / 91°F	21 <sup>st</sup>		33.5°C / 93°F (1999)
Actual Minimum	21.4°C / 70°F	21 <sup>st</sup>		17.2°C / 63°F (1995)
Mean Maximum	30.8°C / 88°F		30.6°C / 88°F	31.8°C / 90°F (2015)
Mean Minimum	23.2°C / 73°F		23.6°C / 75°F	21.6°C / 72°F (1992)
<b>Sunshine Hours</b>				
Average daily duration	6hrs 00mins		7hrs 06mins	
Highest daily	10hrs 18mins	7 <sup>th</sup> 20 <sup>th</sup> 21 <sup>st</sup>		
Percentage received	51%			
<b>Wind</b>				
Direction	140° (South east)			
Speed	6kts / 11km/h			
Maximum Gust	44kts / 82km/h	1 <sup>st</sup>		
<b>Sea-Level Pressure</b>	1013.8mbs / 29.94inHg		1013mbs	

REMARKS: climatological normal rainfall- 30-year average (1982-2011) and average temperature revised - 21-year average (1990-2010)

Wetter than usual conditions with cooler than to usual temperatures were recorded. Trough systems, tropical waves and the Atlantic high-pressure system were the dominant features. Thunderstorms were recorded on 8 days. The Jimmit river flooded it's bank on the 1<sup>st</sup>.