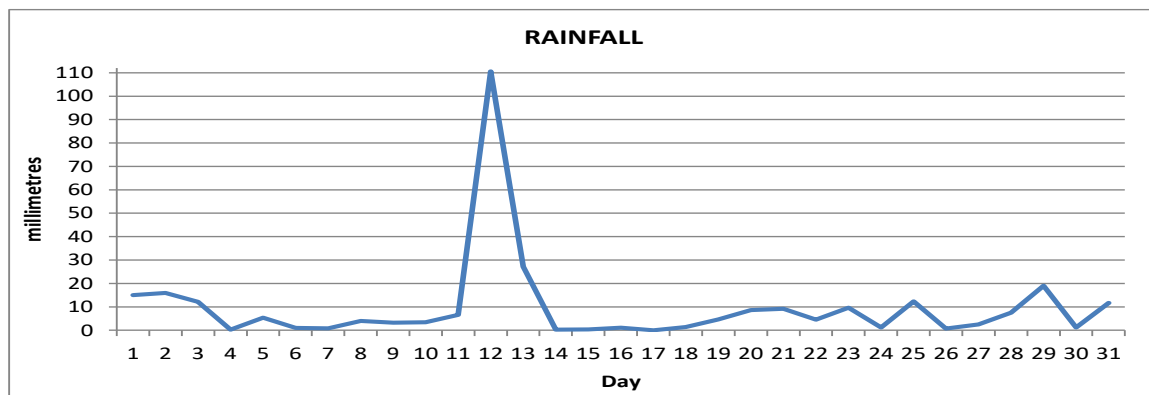
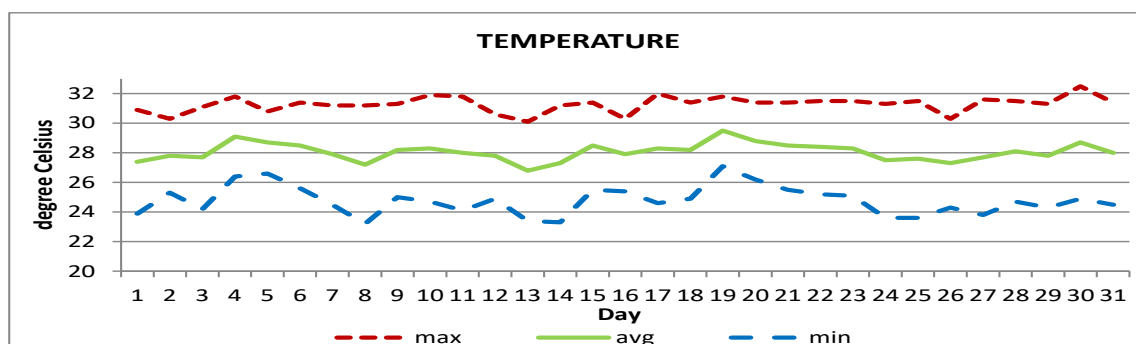


MONTHLY CLIMATE SUMMARY DOUGLAS - CHARLES AIRPORT August 2024



Total	301.3mm/ 11.9in
Normal	267.9mm/ 10.55in
Daily average	9.7mm /0.4in



Average	28.0°C/ 82°F
Normal	27.8°C/ 82°F

OTHER

Parameter	Month	Date	Normal	Monthly Historical
Relative humidity	86%			
Cloud cover	5 oktas			
Rainfall				
Rainfall total	301.3mm/ 11.9in			Max: 457.3mm / 18.00in (2010) Min: 80.1mm / 3.15in (1984)
Cumulative yearly total	1 454.8mm/ 57.28in	.		
Maximum	110.6mm/ 4.4in	12 th		
Number of rainfall days(≥1mm)	25			
Temperature				
Actual maximum	32.5°C / 91°F	30 th		34.3°C/ 93°F (1996)
Actual minimum	23.2°C / 73°F	8 th		20.9°C/ 70°F (1992)
Mean maximum	31.3°C / 88°F		31.0°C/ 88°F	31.9°C / 90°F (2023)
Mean minimum	24.8°C / 77°F		24.7°C/ 77°F	23.0°C / 73°F (1992)
Sunshine hours				
Average daily duration	07hrs 48mins		8hrs 48mins	
Highest daily	11hrs 18mins	7 th & 10 th		
Percentage received	70%			
Wind				
Direction	120° (east south east)			
Speed	06kts / 07mph / 11km/h			
Maximum gust	30kts / 35mph / 56km/h	05 th		
Sea-level pressure	1015.2mbs / 29.98inHg		1013mbs	

REMARKS: Climatological normal -30-year average (1991-2020)

The rainfall total was slightly above normal. Temperatures were as usual. Weak unstable conditions, tropical waves, high pressure systems and tropical storm Ernesto affected the island during the month. Gusty winds and dust haze were recorded throughout the month. Thunderstorms were recorded on 8 days.