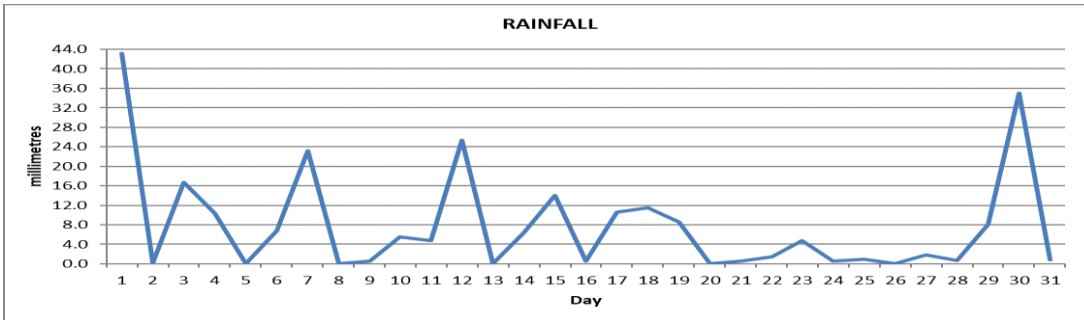
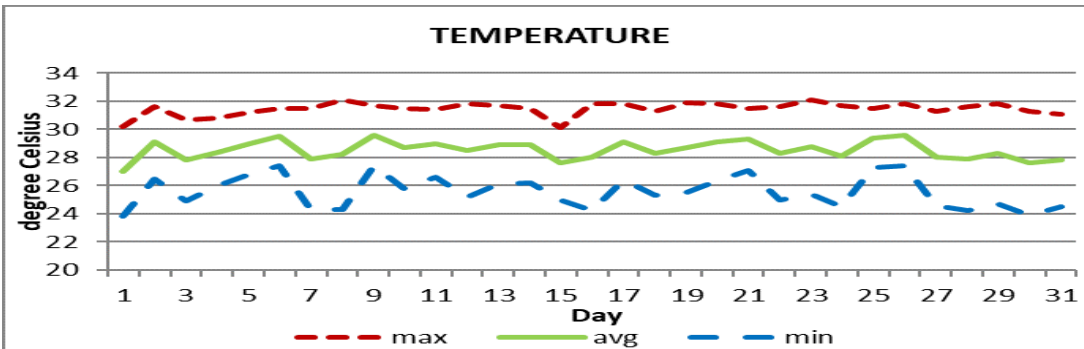


## MONTHLY CLIMATE SUMMARY DOUGLAS-CHARLES AIRPORT JULY 2024



Total	242.7mm / 9.56in
Normal	235.3mm / 9.26in
Daily average	7.83mm / 0.31in



Average	28.5°C / 84°F
Normal	27.8°C / 82°F

### OTHER

Parameter	Month	Date	Normal	Monthly Historical
<b>Relative humidity</b>	84%			
<b>Cloud cover</b>	5 oktas			
<b>Rainfall</b>				
Rainfall total	242.7mm/9.56in			Max: 424.3mm / 16.70in (1987) Min: 43.1mm / 1.70in (1989)
Cumulative yearly total	1,153.5mm / 45.42in	.		
Maximum	43.2mm / 1.7in	01 <sup>st</sup>		
Number of rainfall days(≥1mm)	18			
<b>Temperature</b>				
Actual Maximum	32.1°C / 90°F	8 <sup>th</sup> & 23 <sup>rd</sup>		33.2°C / 91°F (1995)
Actual Minimum	23.8°C / 75°F	01 <sup>st</sup>		20.7°C / 70°F (1989/1993)
Mean Maximum	31.5°C / 90°F		30.7°C / 88°F	31.5°C / 90°F (2024)
Mean Minimum	25.6°C / 79°F		24.9°C / 77°F	23.9°C / 75°F (1992, 2019)
<b>Sunshine hours</b>				
Average daily duration	8hrs 24mins		7hrs 36 mins	
Highest daily	11hrs 6mins	17 <sup>th</sup>		
Percentage received	65			
<b>Wind</b>				
Direction	110° (east south east)			
Speed	08kts / 15km/h			
Maximum gust	44kts / 82km/h	01 <sup>st</sup>		
<b>Sea-level pressure</b>	1016.4mbs / 30.02inHg		1013mbs	

**REMARKS: Climatological normal -30-year average (1991-2020)**

Total rainfall for the month was normal. Temperatures were warmer than usual with record-breaking mean maximum and daily average temperatures. Dust haze and gusty winds were observed throughout the month. Seven thunderstorm days were recorded. Hurricane Beryl, high pressure system, tropical waves and unstable conditions affected the island during the month. Hurricane Beryl strengthened to category 5 on July 1st 8pm to become the earliest category 5 hurricane observed in the Atlantic. Tropical storm watch was discontinued on July 1st at 8am. A maximum gust of 44 kts was recorded on the 1<sup>st</sup>. Very rough seas was observed from the afternoon of the 1<sup>st</sup> to the 3<sup>rd</sup>.