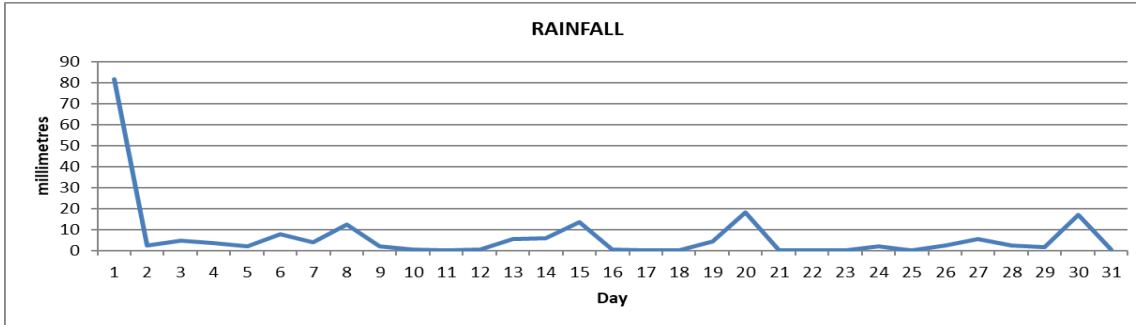
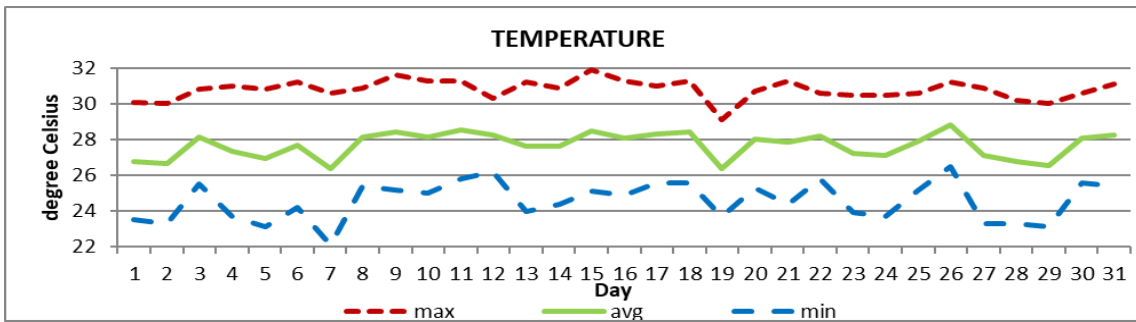


MONTHLY CLIMATE SUMMARY
DOUGLAS - CHARLES AIRPORT
JULY 2022


Total	201.4mm / 7.93in
Normal	235.3mm / 9.26in
Daily average	6.50mm / 0.26in



Average	27.7°C / 82°F
Normal	27.8°C / 82°F

OTHER

Parameter	Month	Date	Normal	Monthly Historical
Relative humidity	82%			
Cloud cover	6 oktas			
Rainfall				
Rainfall total	201.4mm / 7.93in			Max: 424.3mm / 16.70in (1987) Min: 43.1mm / 1.70in (1989)
Cumulative yearly total	1042.1mm / 41.03in			
Maximum	81.5mm / 3.21in	01 st		
Number of rainfall days(≥1mm)	20			
Temperature				
Actual Maximum	31.9°C / 90°F	15 th		33.2°C / 91°F (1995)
Actual Minimum	22.1°C / 72°F	07 th		20.7°C / 70°F (1989/1993)
Mean Maximum	30.8°C / 88°F		30.7°C / 88°F	31.4°C / 88°F (2010, 2017)
Mean Minimum	24.6°C / 77°F		24.9°C / 77°F	23.9°C / 75°F (1992, 2019)
Sunshine hours				
Average daily duration	7hrs 24mins		7hrs 36mins	
Highest daily	10hrs 54mins	23 rd		
Percentage received	57			
Wind				
Direction	110° (east south east)			
Speed	09kts / 17km/h			
Maximum gust	40kts / 74km/h	01 st		
Sea-level pressure	1016.5mbs / 30.02inHg		1013mbs	

REMARKS: Climatological normal -30-year average (1991-2020)

Normal rainfall total was recorded for the month. Daytime highs were as high as usual while night-time lows were cooler than usual. Troughs, tropical waves and the Atlantic high-pressure system were the dominant features. A tropical wave contributed to maximum daily rainfall. Gusty winds and dust haze were observed throughout the month. Thunderstorms were recorded on 1 day.