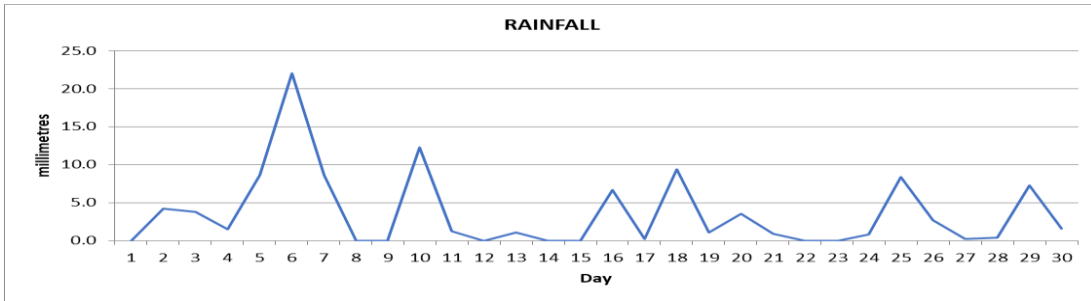
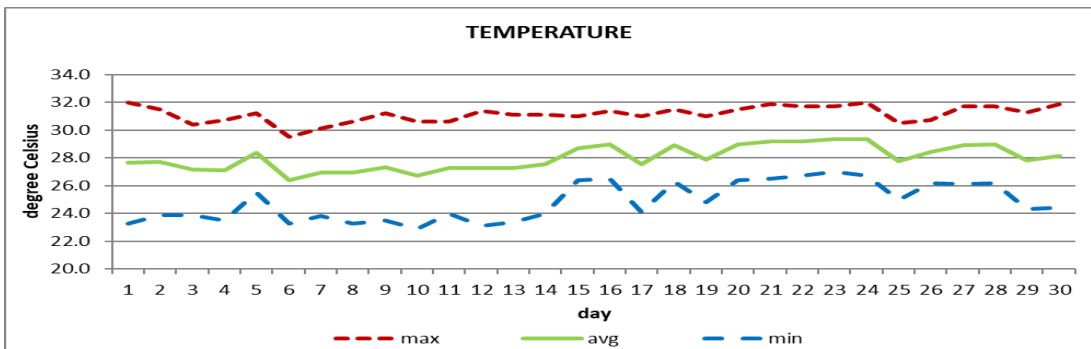


DOUGLAS - CHARLES AIRPORT

June 2020



Total	106.5mm / 4.19in
Normal	191.0mm / 7.52in
Daily average	3.6mm / 0.14in



Average	28.0°C / 82°F
Normal	27.7°C / 82°F

OTHER

Parameter	Month	Date	Normal	Monthly Historical
Relative humidity	79%			
Cloud cover	6 oktas			
Rainfall				
Rainfall total	106.5mm / 4.19in			Max: 424.3mm / 16.70in (1987) Min: 43.1mm / 1.70in (1989)
Cumulative yearly total	616.9mm / 24.29in			
Maximum	22.0mm / 0.87in	6 th		
Number of rainfall days(≥1mm)	17			
Temperature				
Actual Maximum	32.0°C / 90°F	01 st 24 th		33.7°C / 93°F (1985)
Actual Minimum	22.9°C / 73°F	10 th		20.4°C / 70°F (2019)
Mean Maximum	31.2°C / 88°F		30.4°C / 86°F	32.0°C / 90°F (2011)
Mean Minimum	24.8°C / 77°F		25.0°C / 77°F	23.8°C / 73°F (1992)
Sunshine hours				
Average daily duration	7hrs 36mins		7hrs 30mins	
Highest daily	11hrs 48mins	13 th		
Percentage received	62%			
Wind				
Direction	120° (east south east)			
Speed	08kts / 15km/h			
Maximum gust	30kts / 56km/h	24 th		
Sea-level pressure	1016.4mbs / 30.02inHg		1013mbs	

REMARKS: climatological normal rainfall- 30-year average (1981-2010) and average temperature revised - 21-year average (1990-2010)

Below normal rainfall with warmer than to usual temperatures were recorded. A thick plume of Saharan dust resulted in reduced visibility (21st to 24th). Tropical waves, trough systems and the Atlantic high-pressure system affected the island during the month. Gusty winds were observed throughout the month. Dust haze.