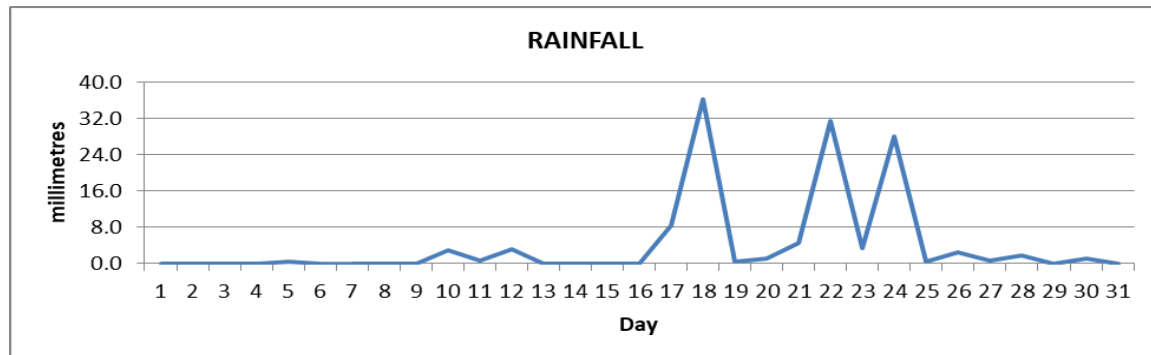
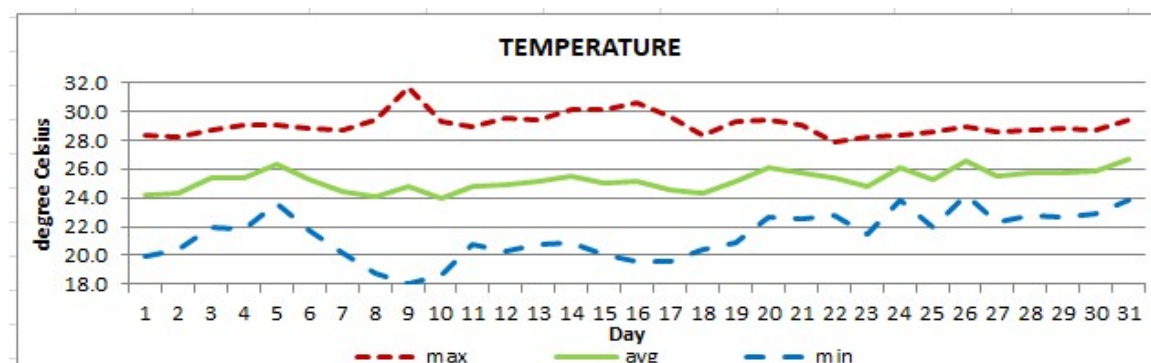


**DOUGLAS - CHARLES AIRPORT**
**March 2023**


Total	127.2mm / 5.01in
Normal	110.5mm / 4.35in
Daily average	4.1mm / 0.16in



Average	25.2°C / 77°F
Normal	25.5°C / 79°F

**OTHER**

Parameter	Month	Date	Normal	Monthly Historical
<b>Relative humidity</b>	77%			
<b>Cloud cover</b>	5 oktas			
<b>Rainfall</b>				
Rainfall total	127.2mm / 5.01in			Max: 317.4mm / 12.50in (1995) Min: 27.7mm / 1.09in (1994)
Cumulative yearly total	297.0mm / 11.69in			
Maximum	36.2mm / 1.43in	27 <sup>th</sup>		
Number of rainfall days(≥1mm)	12			
<b>Temperature</b>				
Actual maximum	31.6°C / 90°F	9 <sup>th</sup>		32.3°C / 90°F (2010)
Actual minimum	18.1°C / 64°F	9 <sup>th</sup>		17.2°C / 63°F (2000)
Mean maximum	29.1°C / 84°F		28.8°C / 84°F	30.8°C / 88°F (2010)
Mean minimum	21.4°C / 70°F		22.3°C / 72°F	21.0°C / 70°F (1987)
<b>Sunshine hours</b>				
Average daily duration	8hrs 48mins		7hrs 36mins	
Highest daily	11hrs 00mins	9 <sup>th</sup>		
Percentage received	73%			
<b>Wind</b>				
Direction	120° (east south east)			
Speed	08kts / 15km/h			
Maximum gust	32kts / 59km/h	27 <sup>th</sup>		
<b>Sea-level pressure</b>	1016.9mbs / 30.03inHg		1013mbs	

**REMARKS:** Climatological normal -30-year average (1991-2020)

The rainfall total was above normal. Daytime temperatures were normal with cooler than usual nights. The Atlantic high-pressure system was the dominant feature. A 9-day dry spell was recorded in the beginning of the month. Gusty winds and dust haze were recorded.