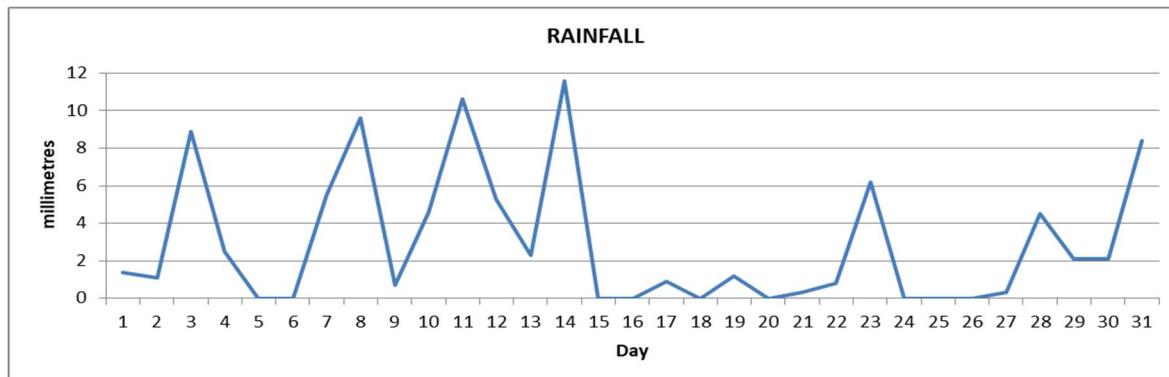


MONTHLY CLIMATE SUMMARY

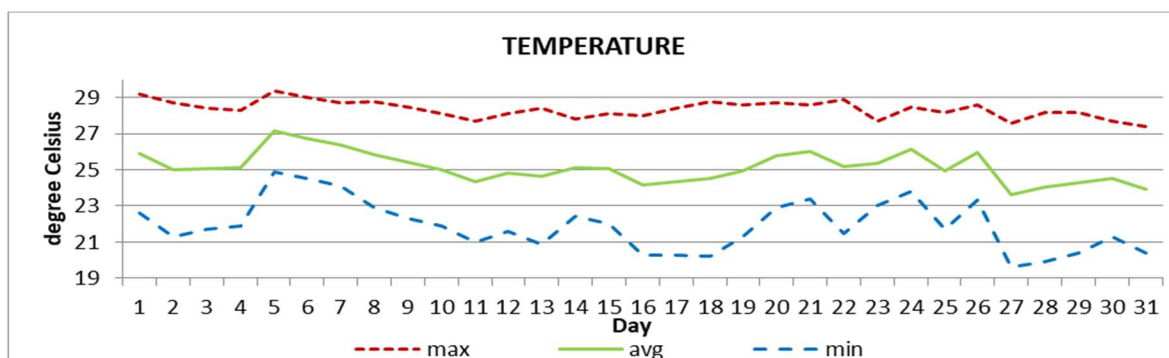
DOUGLAS-CHARLES AIRPORT

January 2023



Total	90.9mm / 3.58in
Normal	136.0mm / 5.35in
Daily average	2.9mm / 0.12in

Average	25.1°C / 77°F
Normal	25.3°C / 77°F



OTHER

Parameter	Month	Date	Normal	MonthlyHistorical
Relative Humidity	79%			
Cloud Cover	5 oktas			
Rainfall				
Rainfall Total	90.9mm / 3.58in			Max: 249.0mm / 9.80in (1998)
Cumulative yearly total	90.9mm / 3.58in			Min: 68.6mm / 2.70in (1989)
Maximum	11.6mm / 0.46in	14 th		
Number of rainfall days (≥1mm)	17			
Temperature				
Actual Maximum	29.4°C / 84°F	05 th		29.4°C / 84°F (2012)
Actual Minimum	19.6°C / 68°F	27 th		20.7°C / 70°F (2019)
Mean Maximum	28.4°C / 82°F		28.2°C / 82°F	31.8°C / 90°F (1987)
Mean Minimum	21.9°C / 72°F		22.4°C / 72°F	17.1°C / 63°F (1988)
Sunshine Hours				
Average daily duration	7hrs 12mins		6hrs 42mins	
Highest daily	10hrs 00mins	16 th		
Percentage received	70%			
Wind				
Direction	110° (East south east)			
Speed	8kts / 15km/h			
Maximum Gust	33kts / 61km/h	04 th		
Sea-Level Pressure	1017.0mbs / 30.03inHg		1013mbs	

REMARKS: climatological normal rainfall and temperature- 30-year average (1991-2020)

Rainfall was less than usual. Mean temperature was slightly below normal with the usual daytime highs but cooler than usual night-time lows. High pressure systems and trough systems were dominant for most of the month. Hazy and breezy conditions were observed.