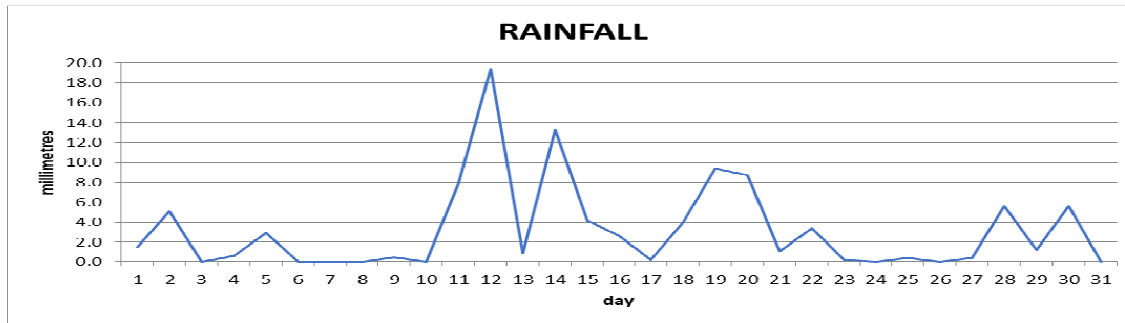
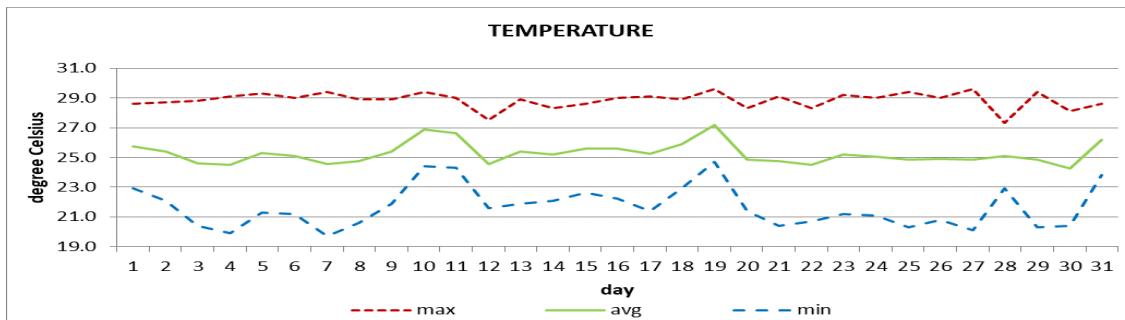


## MONTHLY CLIMATE SUMMARY DOUGLAS - CHARLES AIRPORT January 2021



Total	99.1mm / 3.90in
Normal	142.6mm / 5.61in
Daily average	3.2mm / 0.13in



Monthly mean	25.3°C / 77°F
Average	25.3°C / 77°F

### OTHER

Parameter	Month	Date	Normal	Monthly Historical
<b>Relative Humidity</b>	81%			
<b>Cloud Cover</b>	6oktas			
<b>Rainfall</b>				
number of rainfall days (≥1mm)	16			Max: 249.0mm / 9.80in (1998)
cumulative yearly total	99.1mm / 3.90in			Min: 68.6mm / 2.70in (1989)
maximum	19.4mm / 0.76in	12 <sup>th</sup>		
<b>Temperature</b>				
average maximum	28.8°C / 84°F		28.5°C / 84°F	29.4°C / 84°F (2012)
average minimum	21.7°C / 72°F		22.3°C / 72°F	20.7°C / 70°F (2019)
maximum	29.6°C / 86°F	19 <sup>th</sup> 27 <sup>th</sup>		31.8°C / 90°F (1987)
minimum	19.7°C / 68°F	7 <sup>th</sup>		17.1°C / 63°F (1988)
<b>Sunshine Hours</b>				
average daily duration	7hrs 12mins		6hrs 42mins	
highest daily	9hrs 36mins	17 <sup>th</sup> 26 <sup>th</sup>		
percentage received	64%			
<b>Wind</b>				
direction	110° (east south east)			
speed	07kts / 13km/h			
maximum gust	34kts / 63km/h	20 <sup>th</sup>		
<b>Sea-level pressure</b>	1016.4mbs / 30.02inHg		1013mbs	

**REMARKS:** Climatological normal -30-year average (1991-2020)

The Atlantic High-Pressure System and trough systems were the dominant features. The rainfall total was below normal. Night-time temperatures were cooler than the usual, while day-time peak temperatures were slightly warmer. High surf advisories and Small craft warnings were issued. Gusty winds and hazy conditions were recorded.