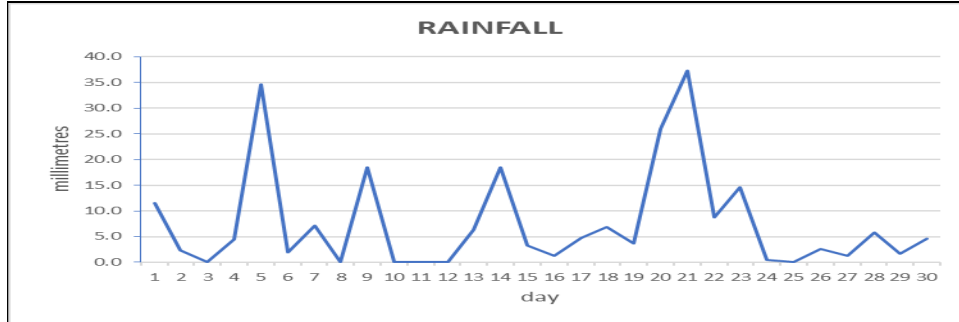
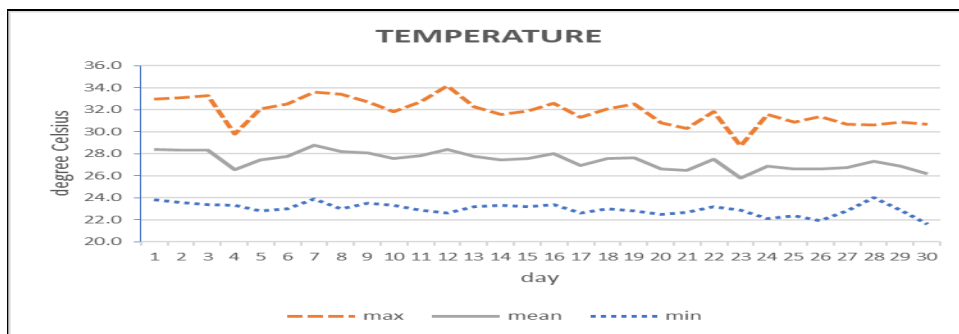


**MONTHLY CLIMATE SUMMARY
CANEFIELD AIRPORT
November 2022**



Total	228.6mm/ 9.00in
Normal	176.7mm/ 6.96in
Daily average	7.6mm/ 0.20in



Average	27.4°C/ 81°F
Normal	27.2°C/ 81°F

OTHER

Parameter	Month	Date	Average	Monthly Historical
Relative humidity	70%			
Cloud cover	5 oktas			
Rainfall				
Rainfall total	228.6mm/ 9.00in			Max: 438.3mm / 17.26in (1984)
Cumulative yearly total	1559.9mm/ 61.40in			Min: 28.4mm / 1.12in (2001)
Maximum	37.3mm/ 1.40in	21 st		
Number of rainfall days(≥1mm)	23			
Temperature				
Actual maximum	34.2°C/ 93°F	12 th		34.2°C / 93°F (2022)
Actual minimum	21.6°C/ 72°F	30 th		19.4°C / 66°F (2008)
Mean maximum	31.8°C / 90°F		31.2°C/ 88°F	32.4°C/ 90°F (1992)
Mean minimum	23.0°C / 73°F		23.2°C/ 73°F	22.4°C/ 72°F (2007)
Wind				
Direction	120° (east south east)			
Speed	03kts/ 06km/h			
Maximum gust	24kts/ 44km/h	19 th , 22 nd		
Sea-level pressure	1012.2mbs/ 29.89inHg		1013mbs	

REMARKS: climatological normal rainfall and temperature- 30-year average (1991-2020)

Rainfall total was normal. Average maximum temperature was above normal, with the 2013 daily high record broken. Average minimum was slightly below normal. Trough systems were dominant for most of the month which resulted in flooding and landslides in some areas on the 6th and 14th. One death occurred as a result of landslides on the 6th. Dust haze reported on a few days. Thunderstorms reported on 3 days.