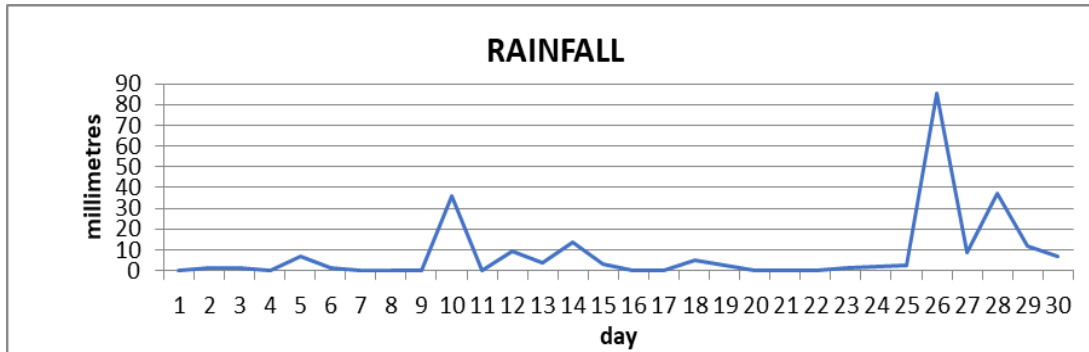
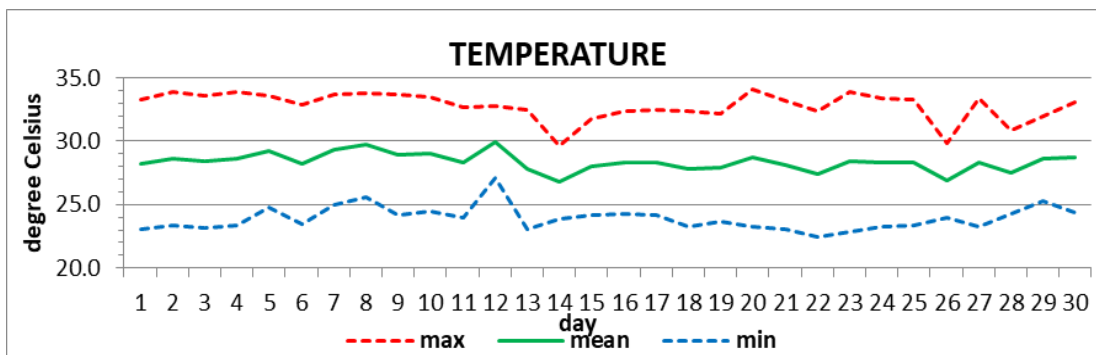


**MONTHLY CLIMATE SUMMARY
CANEFIELD AIRPORT
JUNE 2022**



Total	240.7mm/ 9.48in
Normal	160.1mm/ 6.30in
Daily average	8.0mm/ 0.32in



Average	28.4°C/ 82°F
Normal	28.4°C/ 82°F

OTHER

Parameter	Month	Date	Average	Monthly Historical
Relative humidity	65%			
Cloud cover	5 oktas			
Rainfall				
Rainfall total	240.7mm/ 9.48in			Max: 381.3mm/ 15.01in (2006)
Cumulative yearly total	541.5mm/ 21.32in			Min: 54.6mm/ 2.15in (1985)
Maximum	85.3mm/ 3.36in	26 th		
Number of rainfall days(≥1mm)	19			
Temperature				
Actual maximum	34.1°C/ 93°F	20 th		34.8°C/ 95°F (1991)
Actual minimum	22.5°C/ 73°F	22 nd		21.5°C/ 72°F (2009)
Mean maximum	32.8°C / 91°F		32.0°C/ 90°F	32.9°C/ 91°F (2007, 2010, 2020)
Mean minimum	23.9°C / 75°F		24.6°C/ 77°F	23.2°C/ 73°F (2009)
Wind				
Direction	120° (east south-east)			
Speed	5kts/ 9km/h			
Maximum gust	34kts/ 63km/h	29 th		
Sea-level pressure	1014.1mbs/ 29.95inHg		1013mbs	

REMARKS: Climatological normal -30-year average (1991-2020)

Rainfall total was above normal. Mean temperature was normal with warmer than usual daytime highs and slightly cooler than usual night-time lows. The Atlantic high-pressure system was dominant with a few tropical waves and troughs. Strong winds reported on the 29th following PTC#2. Dust haze observed throughout the month. Thunderstorms were recorded on 3 days.