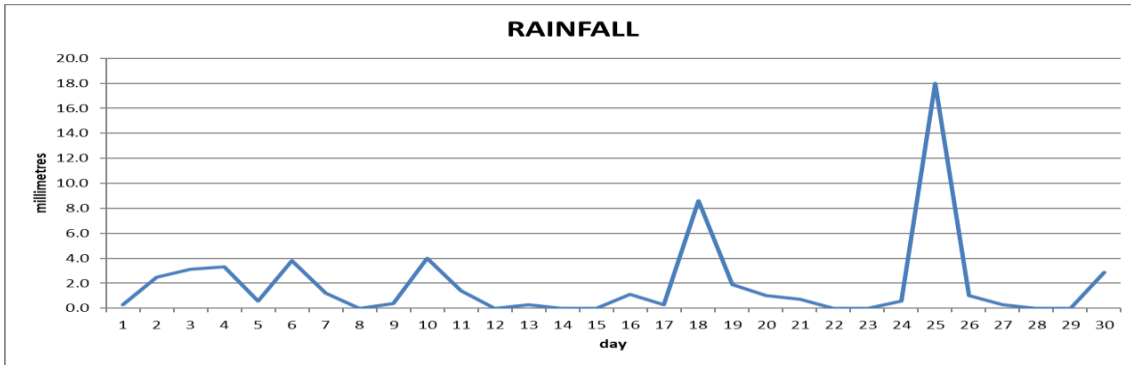
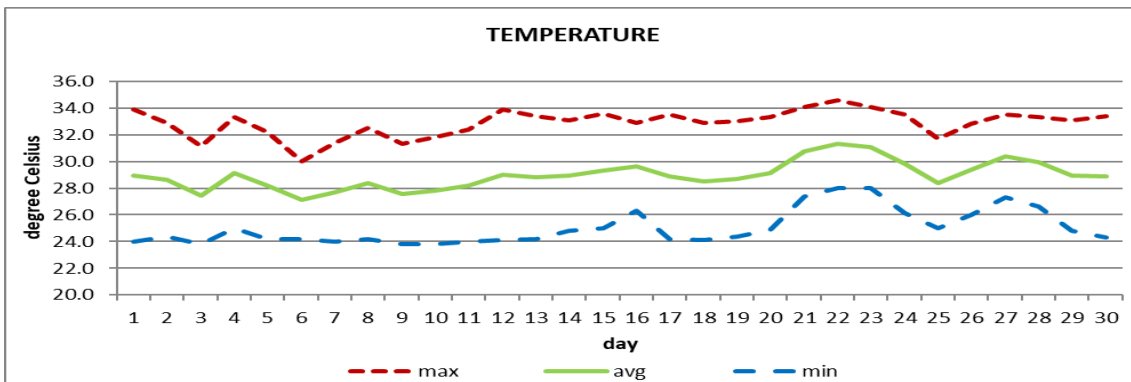


**CANEFIELD AIRPORT**

**JUNE 2020**



Total	57.3mm/ 2.3in
Normal	159.5mm/ 6.28in
Daily average	1.9mm/ 0.07in



Average	29.0°C/ 84°F
Normal	28.1°C/ 82°F

**OTHER**

Parameter	Month	Date	Average	Monthly Historical
Relative humidity	68%			
Cloud cover	5 oktas			
<b>Rainfall</b>				
Rainfall total	57.3mm/ 2.3in			Max: 381.3mm/ 15.01in (2006)
Cumulative yearly total	421.5mm/ 16.59in			Min: 54.6mm/ 2.15in (1985)
Maximum	18.0mm/ 0.71in	25 <sup>th</sup>		
Number of rainfall days(≥1mm)	14			
<b>Temperature</b>				
Actual maximum	34.6°C/ 95°F	22 <sup>nd</sup>		34.8°C/ 95°F (1991)
Actual minimum	23.8°C/ 75°F	3 <sup>rd</sup> 9 <sup>th</sup> 10 <sup>th</sup>		21.5°C/ 72°F (2009)
Mean maximum	32.9°C / 91°F		31.8°C/ 90°F	32.9°C/ 91°F (2007, 2010, 2020)
Mean minimum	25.0°C / 77°F		24.5°C/ 77°F	23.2°C/ 73°F (2009)
<b>Wind</b>				
Direction	160° (south south east)			
Speed	05kts/ 09km/h			
Maximum gust	40kts/ 74km/h	26 <sup>th</sup>		
<b>Sea-level pressure</b>	1014.3mbs/ 29.95inHg		1013mbs	

REMARKS: climatological normal rainfall- 30-year average (1982-2011) and average temperature revised - 21-year average (1990-2010)

Drier (3<sup>rd</sup> driest June on record) and warmer (record high temperatures) than usual conditions.

A thick plume of Saharan dust resulted in reduced visibility (21<sup>st</sup> to 24<sup>th</sup>). The Atlantic high-pressure system and tropical waves were the dominant features. Gusty winds and dust haze were also observed throughout the month. Thunderstorms were recorded on 2 days.